

SANYO

Colour Television Service Manual

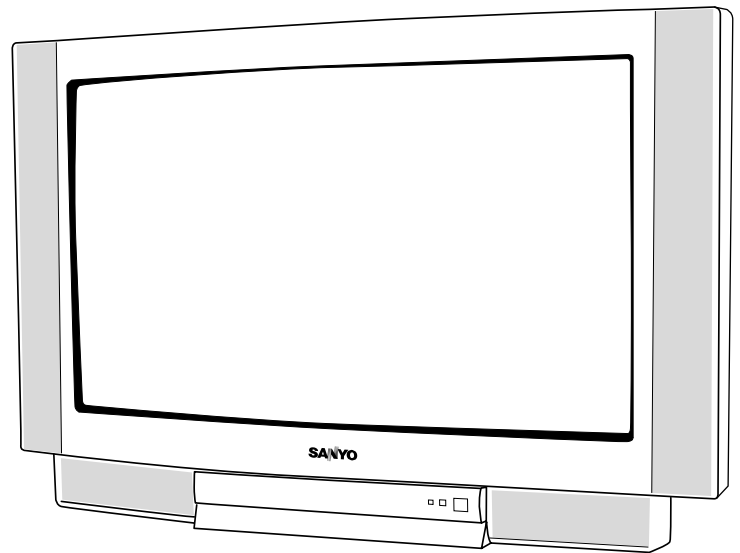
Model **CE28WN5-B**
CE32WN5-B

CE28WN5-B

CE32WN5-B

Service Ref. No. **CE28WN5-B-00**
CE32WN5-B-00

PRODUCT CODE: 111356800 (CE28WN5-B)
111356900 (CE32WN5-B)
ORIGINAL VERSION: Chassis No. EB6-A



Give complete "SERVICE REF. NO." for parts order or servicing, it is shown on the rating sheet on the cabinet back of the TV set.

Note
This TV receiver will not work properly in foreign countries where the television transmission system and power source differ from the design specifications. Refer to the specifications for the design specifications

Contents

Safety precautions/Specifications	2
Block diagrams	3-5
Cabinet Disassembly	6
Adjustment and Repair Procedures	7-11
CPU Functions	12-13
Component Locations	14-15
IC Block Diagrams	16-20
Pin description of semiconductors	21
Part Description and reading of schematic diagram	22
Cabinet Parts List/TV Stand parts list	23-24
Electric Parts List	25-34

SAFETY PRECAUTION

- | | |
|--|--|
| <p>1: An isolation transformer should be connected in the power line between the receiver and the AC line when a service is performed on the primary of the converter transformer of the set.</p> <p>2: Comply with all caution and safety-related notes provided on the cabinet back, inside the cabinet, on the chassis or the picture tube.</p> | <p>3: When replacing a chassis in the cabinet, always be certain that all the protective devices are installed properly, such as, control knobs, adjustment covers or shields, barriers, isolation resistor-capacitor networks etc. Before returning any television to the customer, the service technician must be sure that it is completely safe to operate without danger of electrical shock.</p> |
|--|--|

X-RADIATION PRECAUTION

The primary source of X-RADIATION in the television receiver is the picture tube. The picture tube is specially constructed to limit X-RADIATION emissions. For continued X-RADIATION protection, the replacement tube must be the same type as the original including suffix letter. Excessive high voltage may produce potentially hazardous X-RADIATION. To avoid such hazards, the high voltage must be maintained within specified limit. Refer to this service manual, high voltage adjustment for specific high voltage limit. If high voltage exceeds specified limits, take necessary corrective action. Carefully follow the instructions for +B1 volt power supply adjustment, and high voltage adjustment to maintain the high voltage within the specified limits.

PRODUCT SAFETY NOTICE

Product safety should be considered when a component replacement is made in any area of a receiver. Components indicated by mark \blacktriangle in the parts list and the schematic diagram designate components in which safety can be of special significance. It is particularly recommended that only parts designated on the parts list in this manual be used for component replacement designated by mark \triangle . No deviations from resistance wattage or voltage ratings may be made for replacement items designated by mark \triangle .

SPECIFICATIONS

COMMON SPECIFICATIONS

Power source	AC 220~240V, 50Hz
Television system	System I
Colour system	PAL/NTSC4.43 (PAL/NTSC4.43/MTSC3.58 IN AV MODE)
Receiving channel	UHF: #21~69
Aerial input impedance	75ohm
AV terminal	
21 Pin SCART Terminal	AV1:CENELEC standard with RGB AV2:CENELEC standard with S-inputs AV3:RCA Terminal, Video and Audio (L/R)
Sound output(Music)	12 x 2

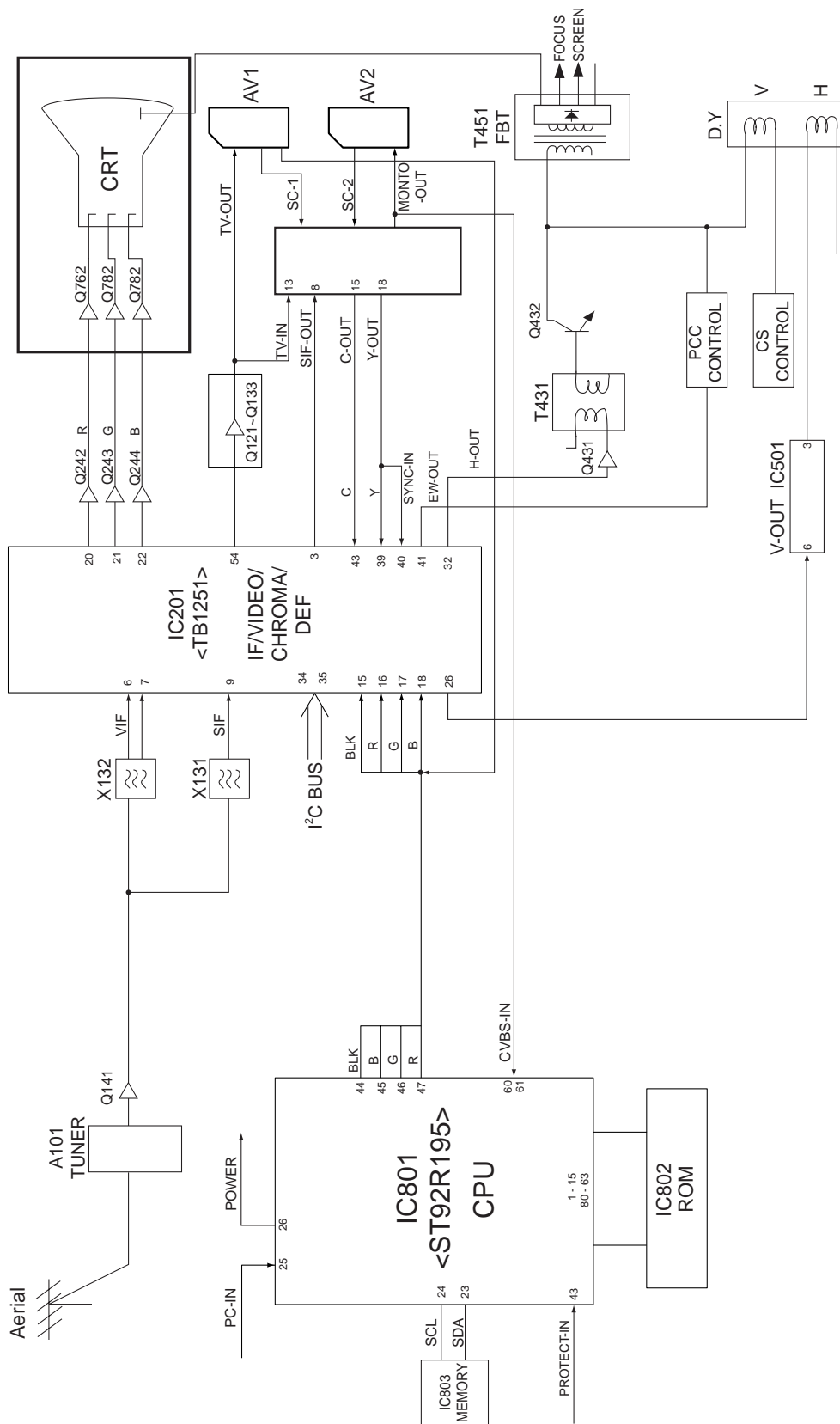
DIFFERENCES

	<u>CE28WN5-B</u>	<u>CE32WN5-B</u>
Dimensions (WxHxD)	779 x 524 x 511.5mm	880 x 577.5 x 567mm
Weight	32.5 Kg	46.3 Kg

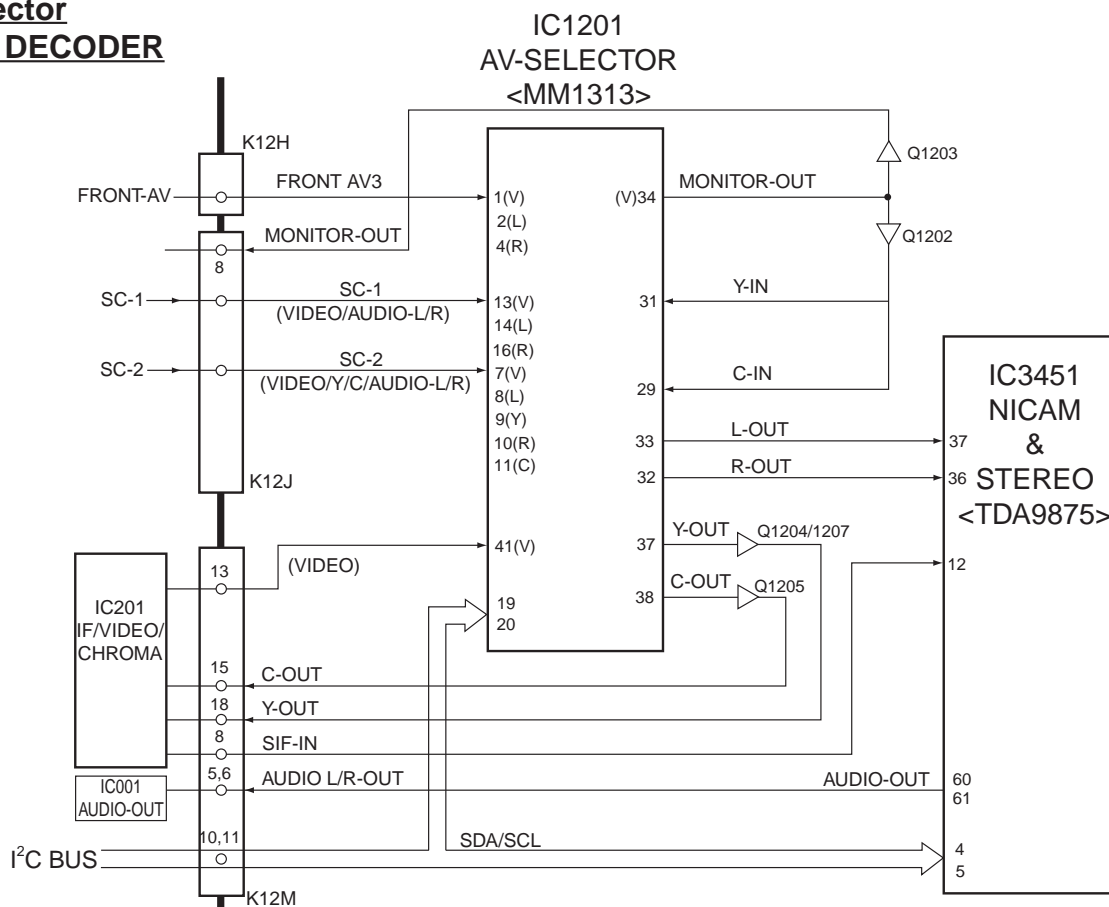
BLOCK DIAGRAM

This is a diagram for all models and therefore differs slightly from the actual block diagram.

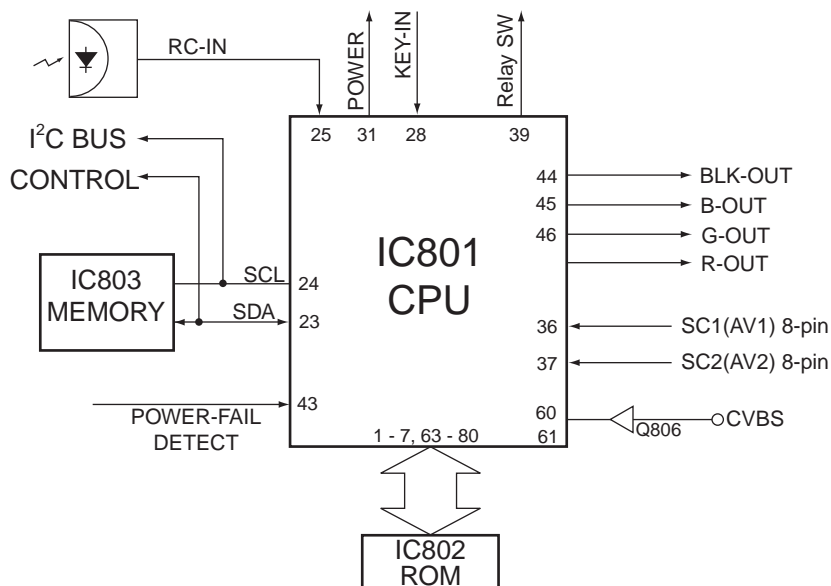
Outline



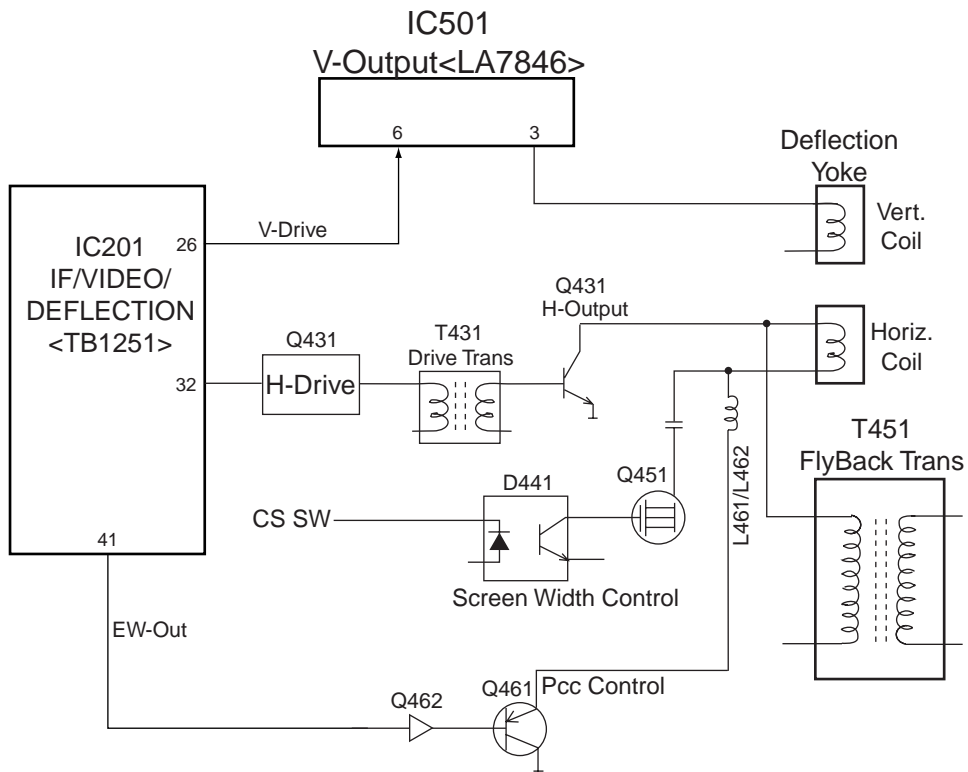
AV Selector NICAM DECODER



System Control



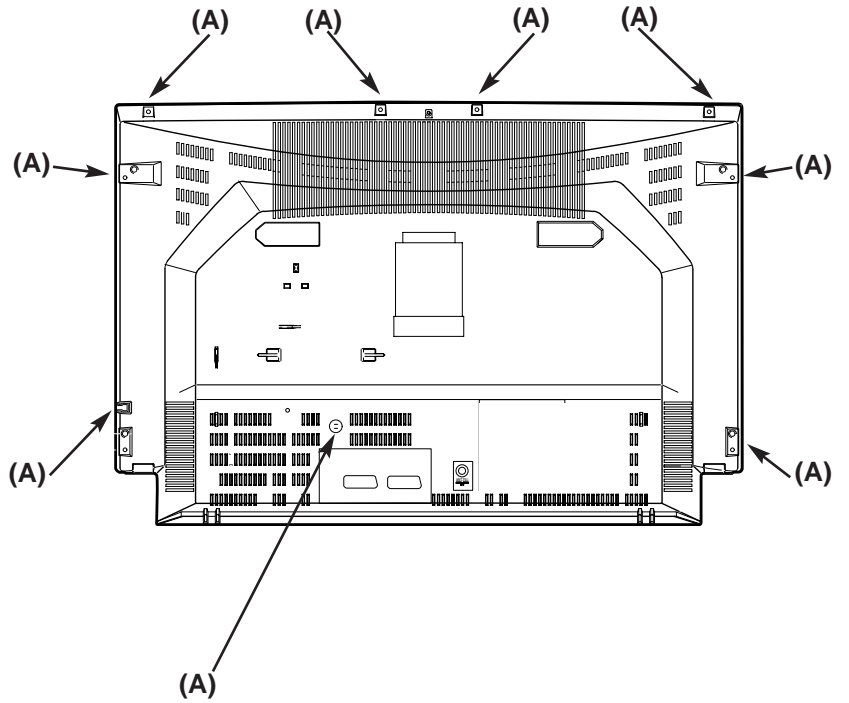
Deflection Control



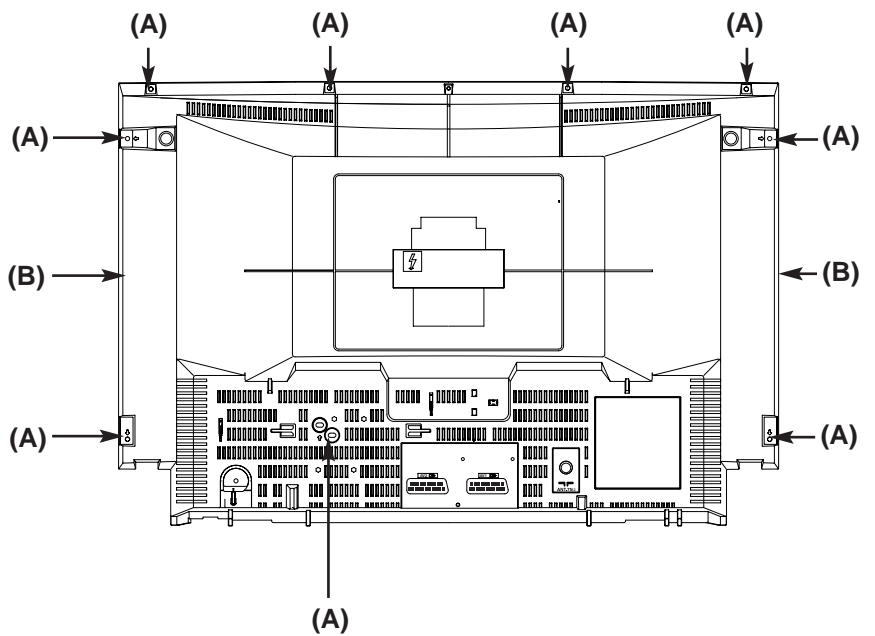
CABINET DISASSEMBLY

CABINET BACK DISASSEMBLY

1. Remove 9 screws(A) for 28"
2. Pull out the cabinet back.



1. Remove 9 screws (A) + 2 screws (B) for 32"
2. Pull out cabinet back



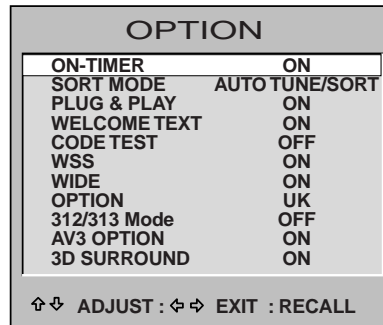
OPTION SETTING

[After replacing the Memory IC (IC803)]

The memory IC, IC803, stores the option data of TV set and service adjustments data for each circuit, therefore, when the memory IC is replaced, it should be performed following setting and "SERVICE ADJUSTMENT" on next page.

To enter to the Option Mode

+ Press and hold the **F/OK** button on the remote control and **P▼** button on the front panel of the TV. The option window will appear on the screen.



To set the option mode

- + Highlight the desired option item by using the **P▲** or **P▼** button .
- + To switch the option mode, use the **Volume - (LEFT)** or **Volume + (RIGHT)** button.
- + The data which is set in the option mode is stored into the memory IC automatically.

Following table shows the available option items and default setting mode.

<u>Option Mode</u>	<u>Mode</u>	<u>Description & Note</u>
ON-TIMER	ON or OFF	On-timer available, default "ON"
SORT MODE	AUTO TUNE/SORT or AUTO TUNE or ATS EURO PLUS	Tuning mode, default "AUTO TUNE/SORT"
PLUG & PLAY	ON or OFF	Plug & Play mode, default "ON"
WELCOME TEXT	ON or OFF	Display message when first set up, default "ON"
CODE TEST	OFF or ON	For factory use, default "OFF"
WSS	ON or OFF	Wide Screen Signaling available, default "ON"
WIDE	ON or OFF	Wide mode, default "ON"
OPTION	UK or IRELAND	Destination option , default "UK"
312/313 Mode	ON or OFF	Teletext mode, default OFF
AV3 OPTION	ON or OFF	Front AV disable, default ON
3D SURROUND	ON or OFF	3D Surround available, default ON

Exit from the Service Mode

+ Press the **RECALL** button.

SERVICE ADJUSTMENTS

Note: Some items of the service adjustments for this chassis are controlled by the CPU, IC801, and the adjustments are carried out by using the RC handset.

[After replacing the Memory IC (IC803)]

The memory IC, IC803, stores the service adjustments data for each circuit, therefore, when the memory IC is replaced, it should be performed "OPTION SETTING" on previous page and the following adjustments, refer to further adjustment on page 14.

ADJUSTABLE SERVICE ADJUSTMENT REGULAR

<u>Item No.</u>	<u>OSD</u>	<u>Description</u>
1	AGC	AGC Adjustment
2	CUT	Cut-Off Drive Adjustment
3	GRY	G-Drive Adjustment
4	GRY	B-Drive Adjustment
7	HBP	H-Blanking Phase Adjustment
8	OSD	OSD Positioning Adjustment

WIDE

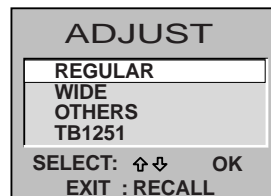
<u>Item No.</u>	<u>OSD</u>	<u>Description</u>
1	P V-P	Vertical Centre Adjustment
2	P H-P	Horizontal Centre Adjustment
5	P V-S	Vertical Size Adjustment
6	P H-S	Horizontal Size Adjustment
7	P PCC	Pcc Adjustment
8	P TRP	Trapezoid Distortion Adjustment
10	P CNR	Corner Adjustment

IMPORTANT NOTICE

Do not attempt to adjust service adjustments not listed on the above otherwise it may cause loss of performance and product safety.

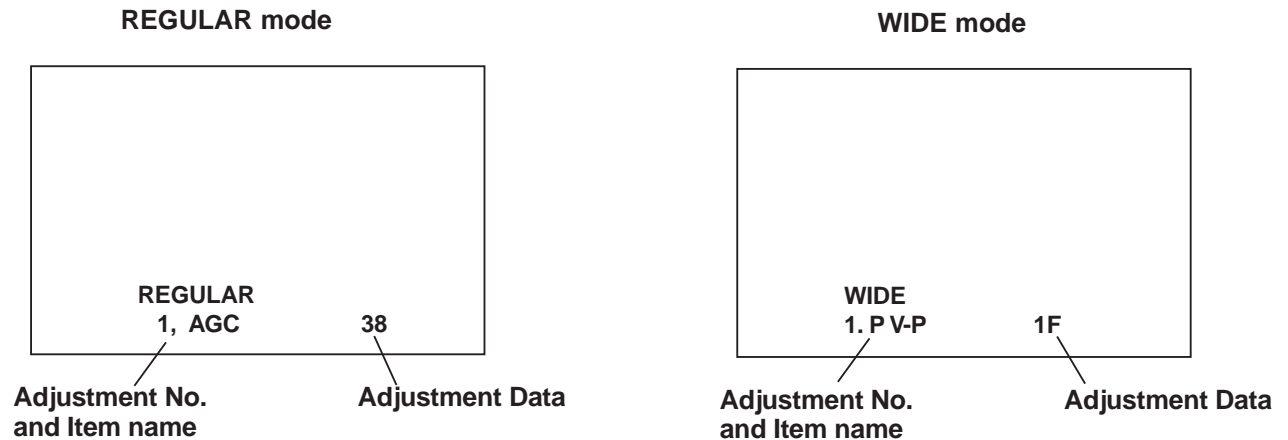
To enter to the Service Mode

+ Press and hold the **GREEN** button on the remote control and then press the **P▼** button inside of the door. The adjustment window will appear on the screen.



To select the mode and service item and change data value

- + Highlight the desired adjustment mode by using the **P▲** or **P▼** button and then press the **F/OK** button.
- + To select the adjustment item, use the **P▲** or **P▼** button.
- + To change the service data, use the **Volume -(LEFT)** or **Volume + (RIGHT)** button.
- + The data which is set in the service mode is stored into the memory IC automatically.



Exit from the Service Mode

- + Press the **RECALL** button or turn off the TV set by using the Mains switch.

INITIALISATION OF MEMORY IC

To initialise the memory IC (IC803), press and hold the **NORMAL** button on the remote control and then press the **P▲** button on the front panel of the TV set, and then turn the Mains switch Off and On. Now the initialisation is completed.

When initialised the memory IC, all of the setting data (option data and service adjustment data) stored in the IC are reset to the default value. So it is necessary to set the option settings and readjust the service adjustments listed on left page.

ADJUSTMENTS

IMPORTANT NOTICE

Do not attempt to adjust the following service adjustments except when adjustments are required in servicing otherwise it may cause loss of performance and product safety.

+ B VOLTAGE ADJUSTMENT

1. Receive white raster pattern.
2. Set controls to normal.
3. Connect digital voltmeter to test point TP-B and GND.
4. Adjust voltage to $145 \pm 0.5V$ by using VR641.

AGC ADJUSTMENT

1. Input and tune an RF signal which is UHF to the clearest station.
2. Connect digital voltmeter to test point TP-A and GND.
4. Enter to the service mode and select mode "REGULAR", and select item no.1 "REGULAR 1, AGC".
5. Press the **LEVEL+** or **LEVEL -** button to adjust voltage to be 3.2Vdc.

FOCUS ADJUSTMENT

By using FOCUS VR, adjust focus control for well defined scanning lines.

GREY SCALE ADJUSTMENT

SCREEN ADJUSTMENT

1. Receive black & white pattern.
2. Enter to the service mode and select mode "REGULAR", and select item no. 2 "REGULAR 2, CUT". The horizontal line will appear on the screen.
3. Set the SCREEN VR for one colour to be just visible.
4. Using the numeric buttons shown set each colour to minimum by decreasing to the point where any further decrease resets the adjustment to maximum value.

BIAS ADJUSTMENT

5. By using the buttons 1, 2, 4, 5, 7, 8 on the remote control, adjust the line to be white.

The key allocation is as follows;

Button No. Operation

- | | |
|---|----------------|
| 1 | Increase Red |
| 2 | Decrease Red |
| 4 | Increase Green |
| 5 | Decrease Green |
| 7 | Increase Blue |
| 8 | Decrease Blue |

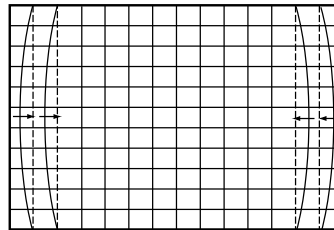
DRIVE ADJUSTMENT

6. Select item no.3 "REGULAR 3, GRY" (G-Drive) or 4 "REGULAR 4, GRY" (B-Drive) and adjust both initially to 3F.
7. Change data value of each item by using **LEVEL +** or **LEVEL -** button to obtain the proper white balance.

PCC ADJUSTMENT

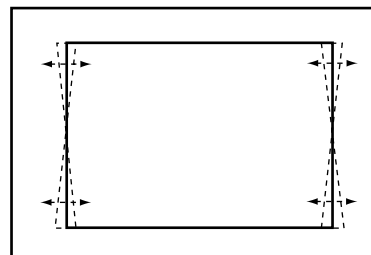
PCC ADJUSTMENT

1. Receive cross hatch pattern and set screen mode to "FULL".
2. Enter to the service mode and select mode "WIDE", and select item no. 7 "WIDE 7.P PCC".
3. Press the **LEVEL+** or **LEVEL -** button to adjust the vertical line to be straight.



TRAPEZOID ADJUSTMENT

1. Receive cross hatch pattern and set screen mode to "FULL".
2. Enter to the service mode and select mode "WIDE", and select item no. 8 "WIDE 8.P TRP".
3. Press the **LEVEL+** or **LEVEL -** button to correct the trapezoid distortion of the vertical line.



CORNER ADJUSTMENT

1. Receive cross hatch pattern and set screen mode to "FULL".
2. Enter to the service mode and select mode "WIDE", and select item no. 10 "WIDE 10.P CNR".
3. Press the **LEVEL+** or **LEVEL -** button to correct the distortion of the vertical line around the corners.

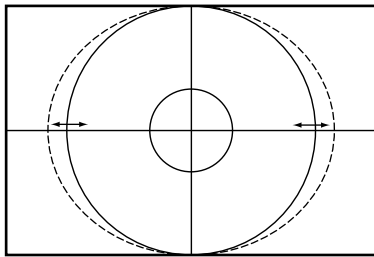
HORIZONTAL ADJUSTMENT

HORIZONTAL CENTRING ADJUSTMENT

1. Receive circular pattern and set screen mode to "FULL".
2. Enter to the service mode and select mode "WIDE", and select item no. 2 "WIDE 2.P H-P".
3. Press the **LEVEL+** or **LEVEL -** button to adjust the horizontal centre.

HORIZONTAL WIDTH ADJUSTMENT

1. Receive circular pattern and set screen mode to "FULL".
2. Enter to the service mode and select mode "WIDE", and select item 6 "WIDE 6.P H-W".
3. Press the **LEVEL+** or **LEVEL -** button to adjust the horizontal width.



HIGH-VOLTAGE CONFIRMATION

1. Receive circular pattern and set screen mode to "FULL".
2. Set controls to normal.
3. Connect high-voltage meter to the anode of CRT and GND.
4. Confirm that voltage is $29.5\pm 1.0\text{kV}$ for 28" model.
 $30.5\pm 1.0\text{kV}$ for 32" model.

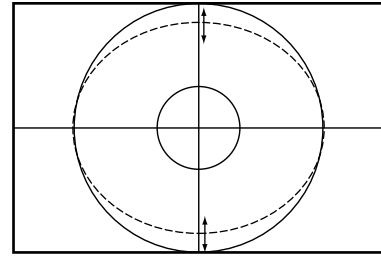
VERTICAL ADJUSTMENT

VERTICAL CENTRING ADJUSTMENT

1. Receive circular pattern and set screen mode to "FULL".
2. Enter to the service mode and select mode "WIDE", and select item no. 1 "WIDE 1.P V-P".
3. Press the **LEVEL+** or **LEVEL -** button to adjust the vertical centre.

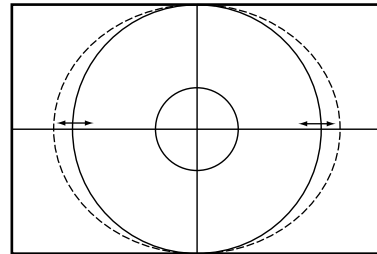
VERTICAL HEIGHT ADJUSTMENT

1. Receive circular pattern and set screen mode to "FULL".
2. Enter to the service mode and select mode "WIDE", and select item no. 5 "WIDE 5.P V-S".
3. Press the **LEVEL+** or **LEVEL -** button to adjust the vertical height.



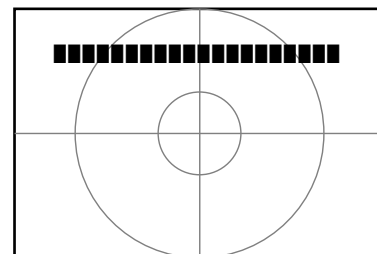
H-BLANK ADJUSTMENT

1. Receive circular pattern .
2. Enter to the service mode and select mode "REGULAR", and select item no. 7 "REGULAR 7.HBF".
3. Press the **LEVEL+** or **LEVEL -** button to adjust the centre of picture image to be screen centre.



OSD POSITIONING ADJUSTMENT

1. Receive circular pattern and set screen mode to "FULL".
2. Enter to the service mode and select mode "REGULAR", and select item no. 8 "REGULAR 8 OSD". The OSD test bar will appear on the top of screen.
3. Press the **LEVEL+** or **LEVEL -** button to adjust proper OSD positioning.



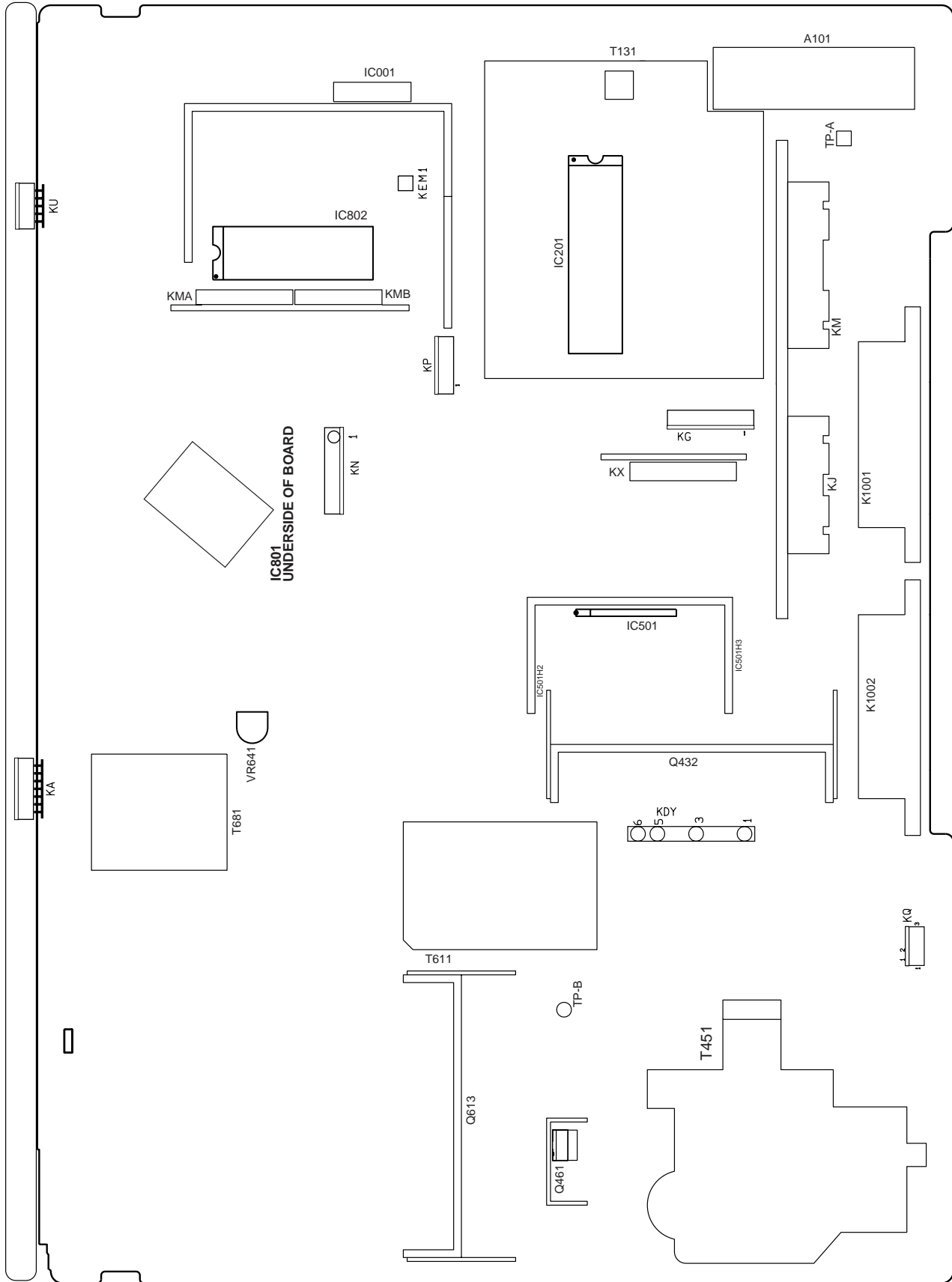
CPU PORT FUNCTIONS

Pin No.	Function Name	Function	IN/OUT
1	MMU0	External memory 0	OUT
2	MMU3	External memory 3	OUT
3	ADDR10	Address bus 10	OUT
4	DSN	Data Strobe	
5	ADDR11	Address bus 11	OUT
6	ADDR9	Address bus 9	OUT
7	ADDR8	Address bus 8	OUT
8	RWN	Read Write Strobe	
9	GND		
10	VDD	Power Supply	IN
11	OSC-IN	Clock Input	IN
12	OSC-OUT	Clock Output	OUT
13	ADDR13	Address bus 13	OUT
14	ADDR14	Address bus 14	OUT
15	MMU1	External memory 1	OUT
16	MMU2	External memory 2	OUT
17	MMU4	External memory 4	OUT
18	MMU5	External memory 5	OUT
19	P3.7/CSO	Protect - Power failure detect input	IN
20	P3.6/ASN	Dolby CLK(L/L')	OUT
21	P3.5	Dolby SO(Super 3D)	OUT
22	P3.4	PITTARI switch	OUT
23	P5.1	IIC BUS SDA	IN/OUT
24	P5.0	IIC BUS SCL	OUT
25	P2.0	Remote Control Signal Input	IN
26	P2.3	Power Relay & LED Drive On: L	OUT
27	P2.4	SUB CPU SO	OUT
28	P0.2	Key switch input	IN
29	P0.1	SUB CPU CLK	OUT
30	P0.0	SUB CPU SI	IN
31	P4.7	THRESHOLD switch	OUT
32	P4.6	JIMAKU(Caption) switch	OUT
33	P4.5	On-Timer LED Drive ON: L	OUT
34	VDD		IN
35	GND		
36	P2.1	AV1 Scart function input	IN
37	P2.2	AV2 Scart function input	IN
38	P2.5	RF AGC input	IN
39	P4.4	H-Blank On/Off	OUT
40	P4.3	AMP Mute Mute On: H	OUT
41	P4.2	Dolby RQ	OUT
42	P4.1	H-Blank Phase	OUT
43	P4.0	50/60Hz output 50Hz: H	OUT
44	FB	BLK Output for OSD (Active H)	OUT
45	B	Blue Output for OSD (Active H)	OUT
46	G	Green Output for OSD (Active H)	OUT
47	R	Red Output for OSD (Active H)	OUT
48	V-SYNC	V-Sync Input (Active H)	IN
49	H-SYNC	H-Sync Input (Active H)	IN
50	WSCR	VPS/WSS Slicer Line PLL	

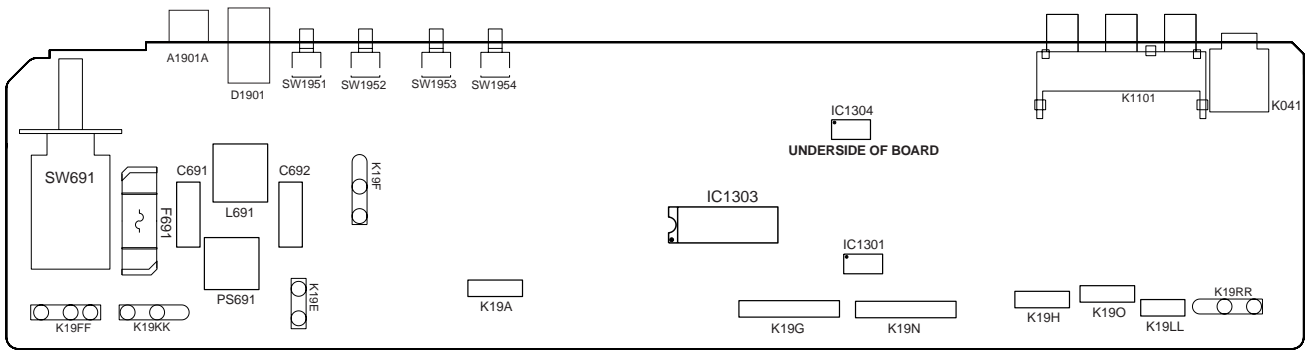
Pin No.	Function Name	Function	IN/OUT
51	WSCF	VPS/WSS Slicer Line PLL	
52	VDD-A	Analogue Power Supply	IN
53	PXFM	Pixel Frequency Multiplier	
54	RESET	Reset Input (Active L)	IN
55	MCFM	Pixel Frequency Multiplier	
56	JTRSTO		
57	TXCF		
58	CVBS0		
59	TEST0		
60	CVBS1	Video signal Input	IN
61	CVBS2	Video Signal Input	IN
62	GND-A		
63	DAT3	Data bus 3	IN
64	DAT4	Data bus 4	IN
65	DAT5	Data bus 5	IN
66	DAT6	Data bus 6	IN
67	DAT7	Data bus 7	IN
68	DAT2	Data bus 2	IN
69	DAT1	Data bus 1	IN
70	DAT0	Data bus 0	IN
71	ADDR0	Address bus 0	OUT
72	ADDR1	Address bus 1	OUT
73	ADDR2	Address bus 2	OUT
74	ADDR3	Address bus 3	OUT
75	ADDR4	Address bus 4	OUT
76	ADDR5	Address bus 5	OUT
77	ADDR6	Address bus 6	OUT
78	ADDR7	Address bus 7	OUT
79	ADDR12	Address bus 12	OUT
80	ADDR15	Address bus 15	OUT

COMPONENT LOCATIONS

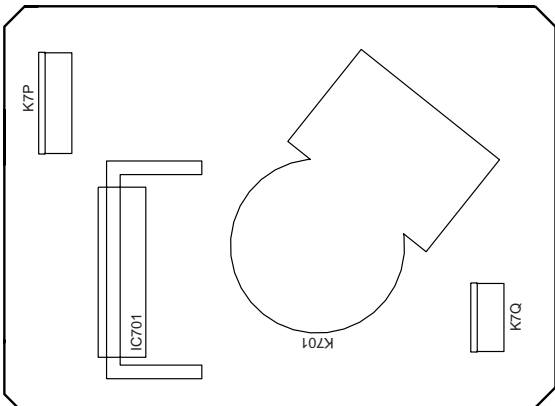
MAIN BOARD



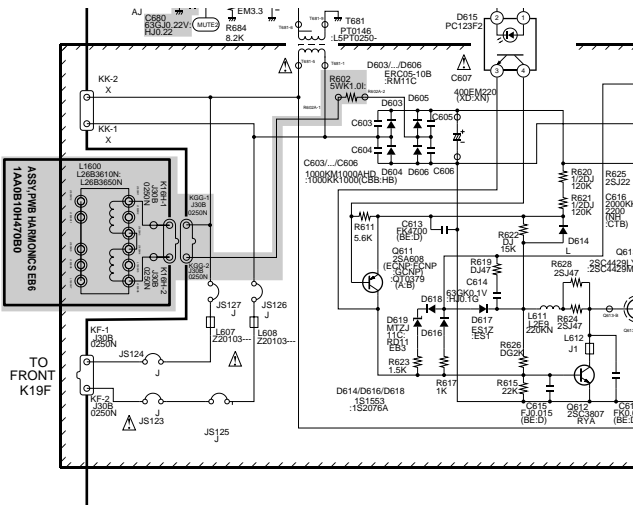
FRONT BOARD



CRT BOARD

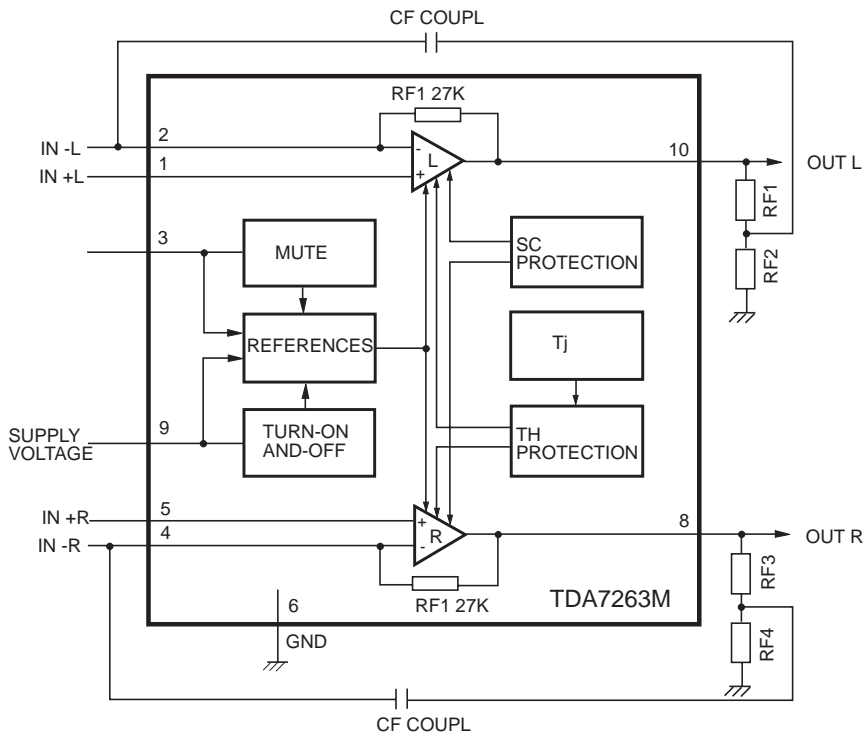


HARMONICS PANEL

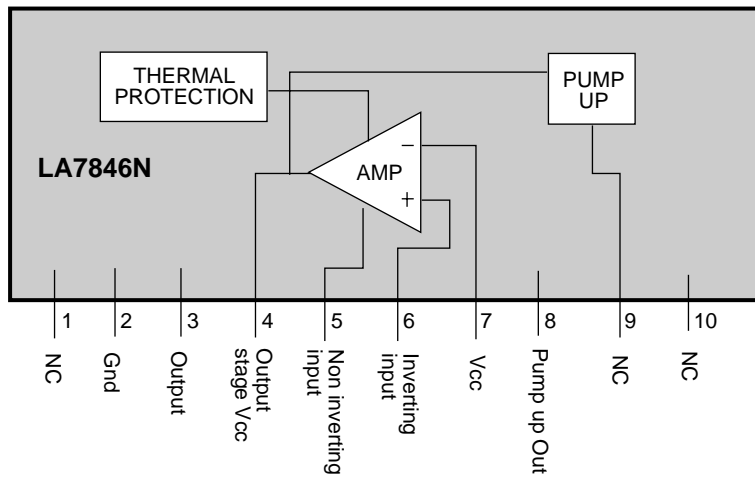


IC BLOCK DIAGRAMS

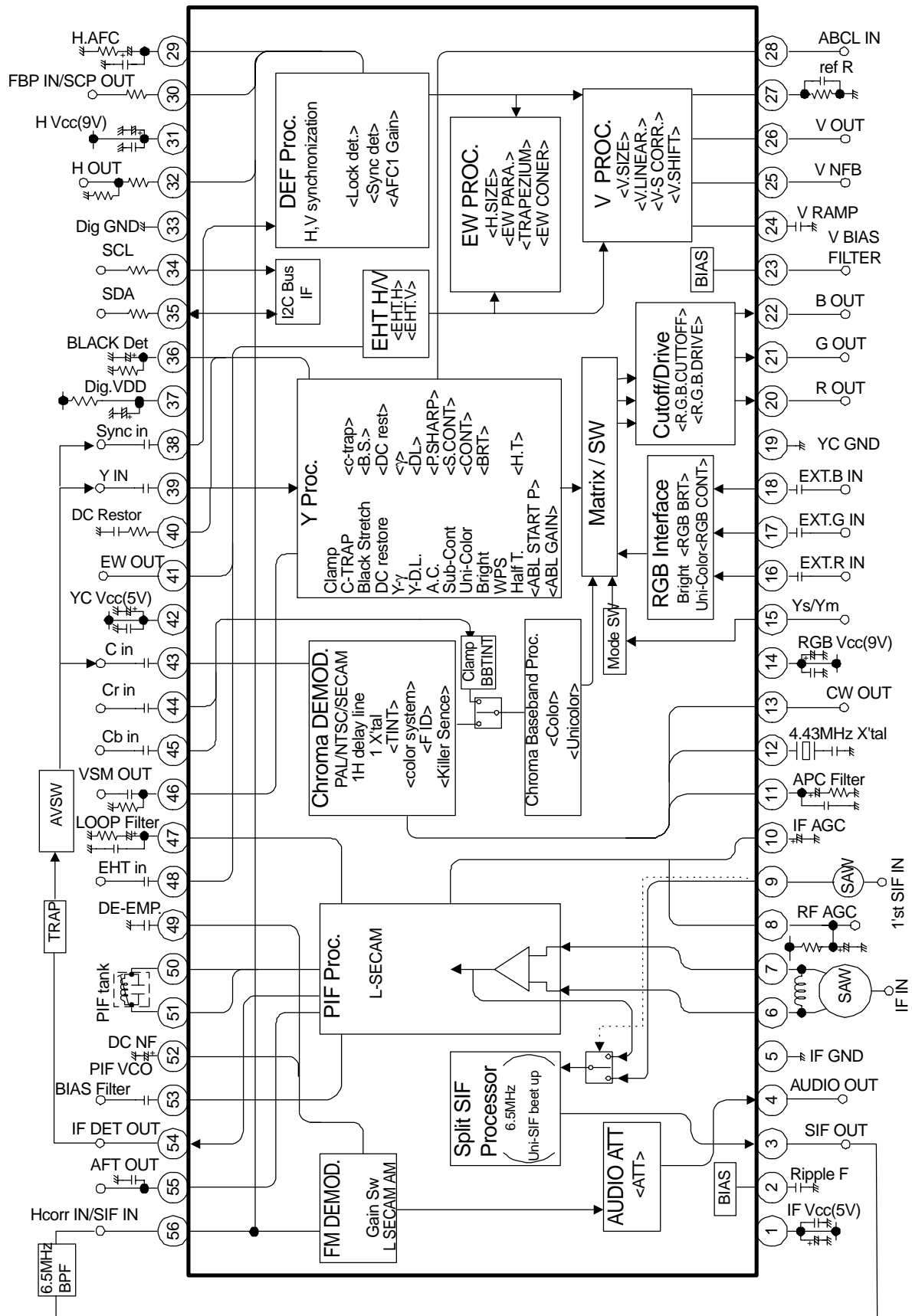
IC001 TDA7263M <Audio Output>



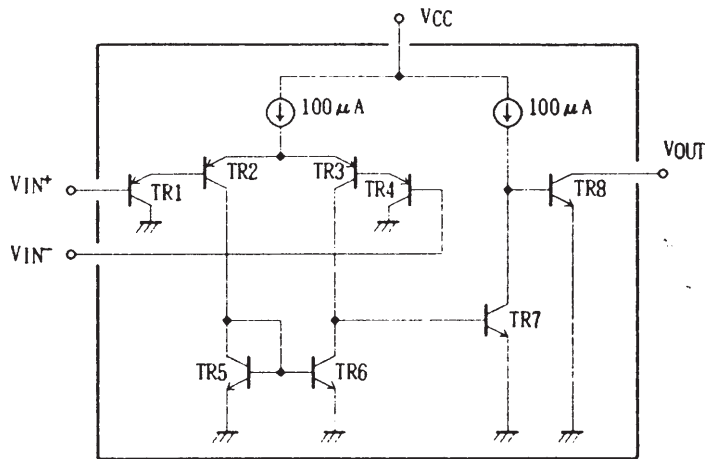
IC501 LA7846N <Vertical Output>



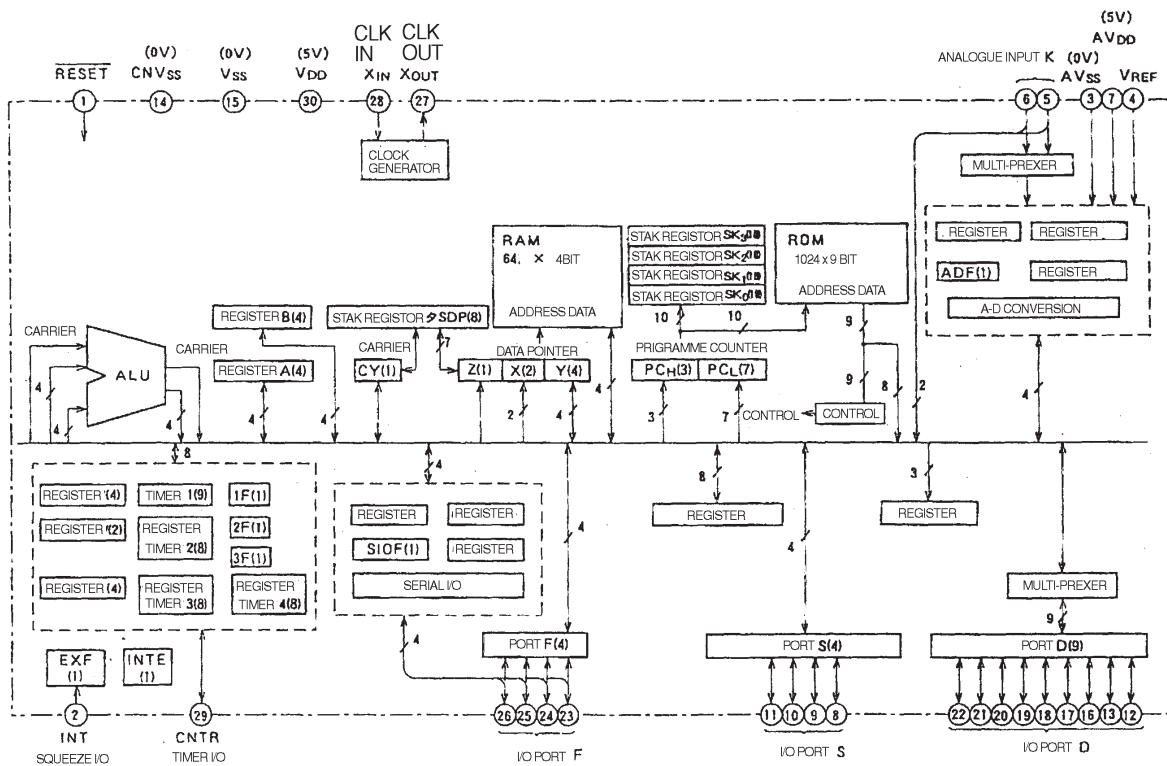
IC201 TB1251AN <IF/Video/Chroma/Def.>



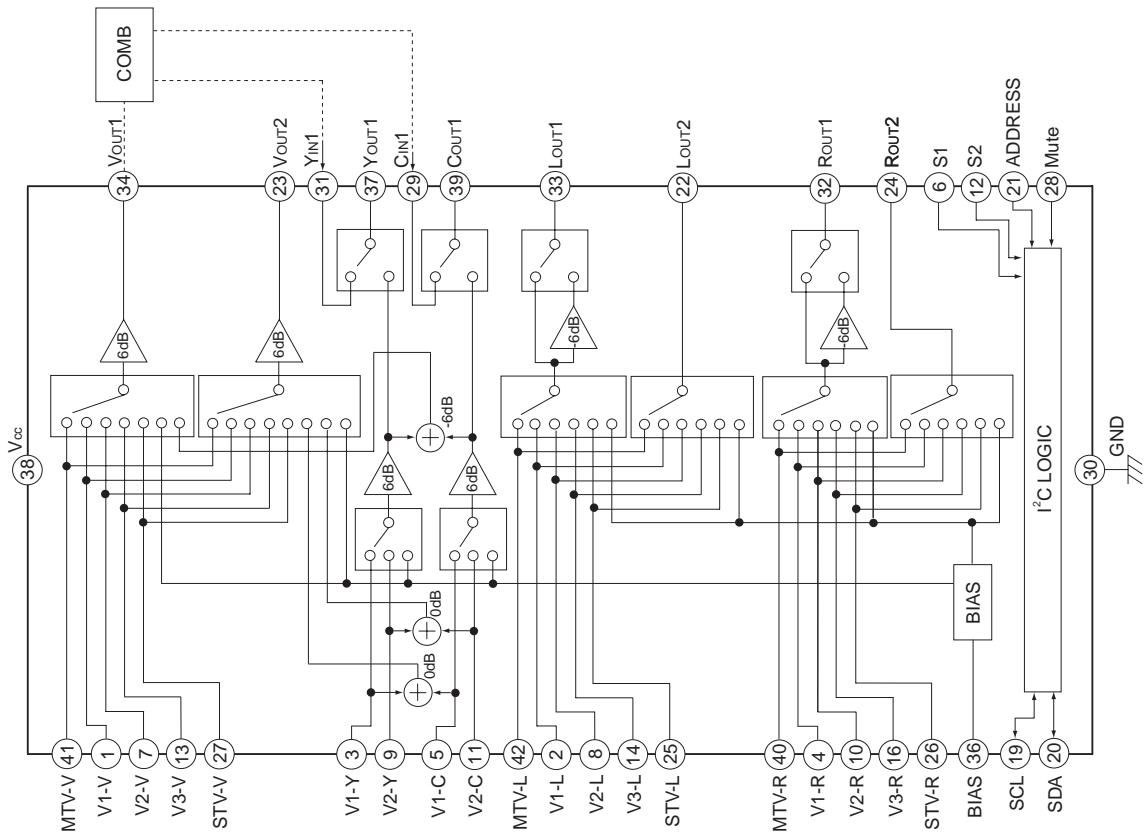
IC1301 LA6393D <Operation Amplifier>



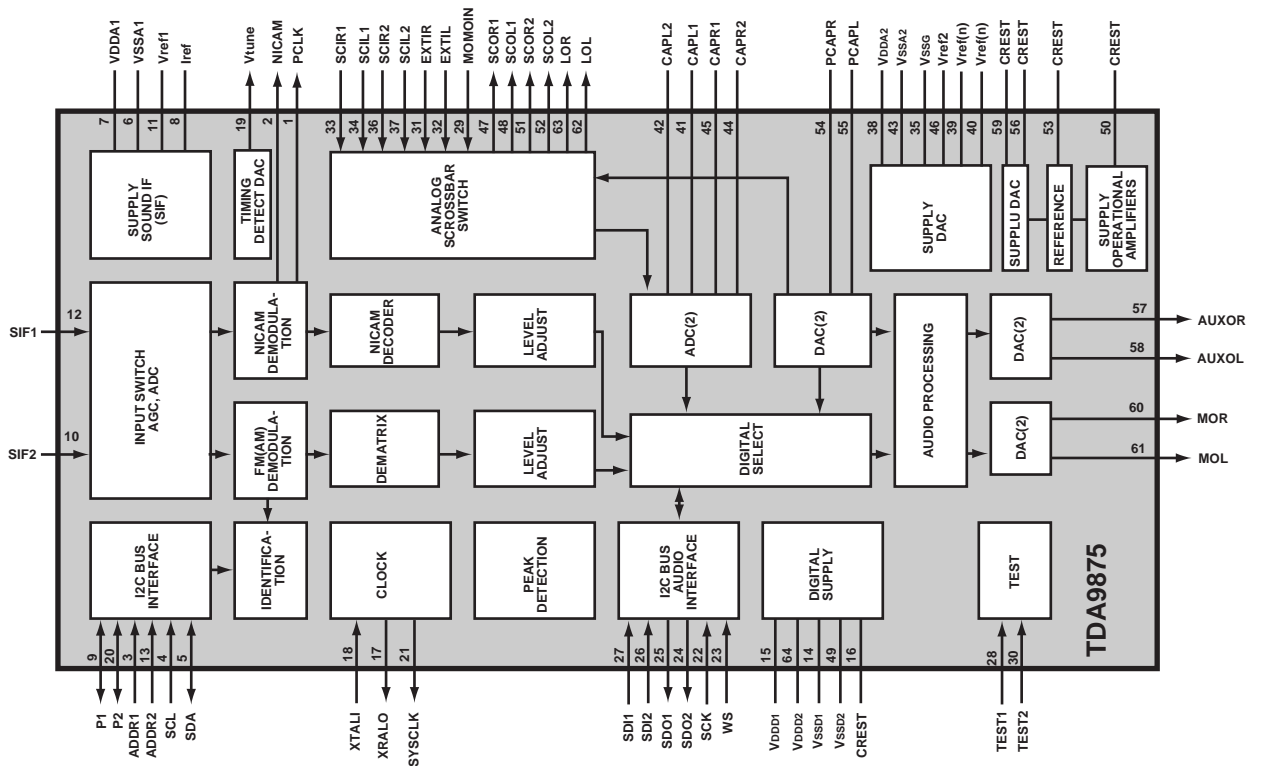
IC1303 M34225M1 <Single Chip Micro-computer>



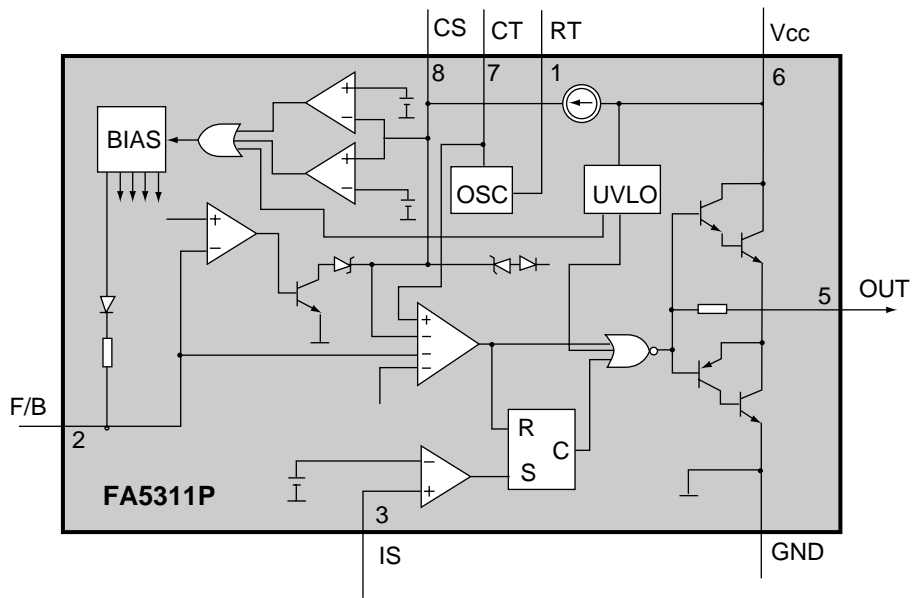
IC1201 MM1313BD <AV Selector>



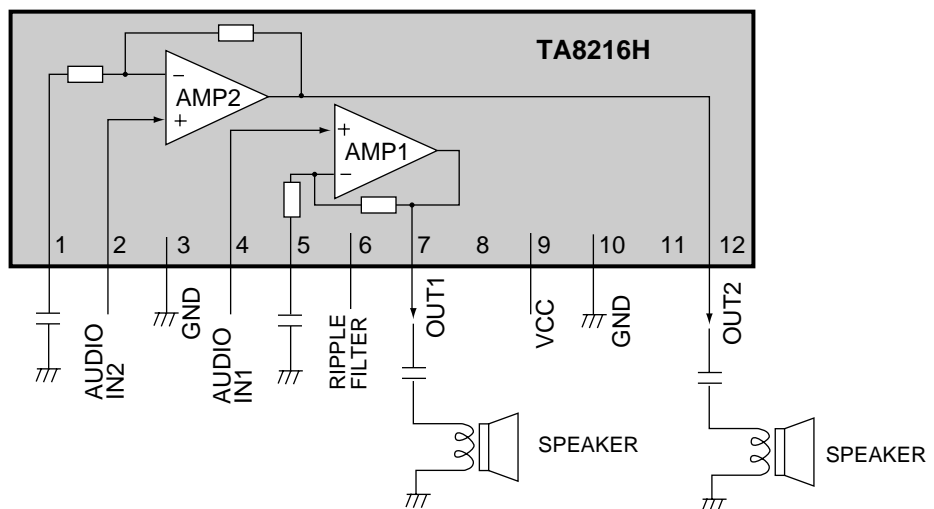
IC3451 TDA9875A <NICAM & Stereo Sound Decoder>



IC3001 FA5311P <Power Switching Controller>

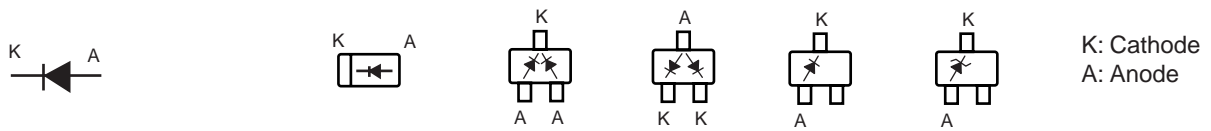


IC3051 TA8216H <Audio Amplifier>

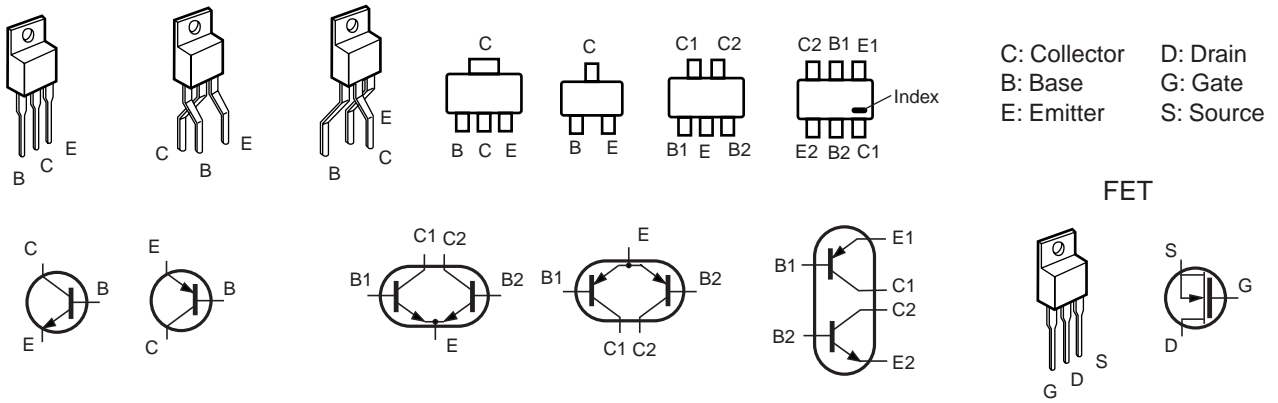


PIN DESCRIPTION OF SEMICONDUCTORS

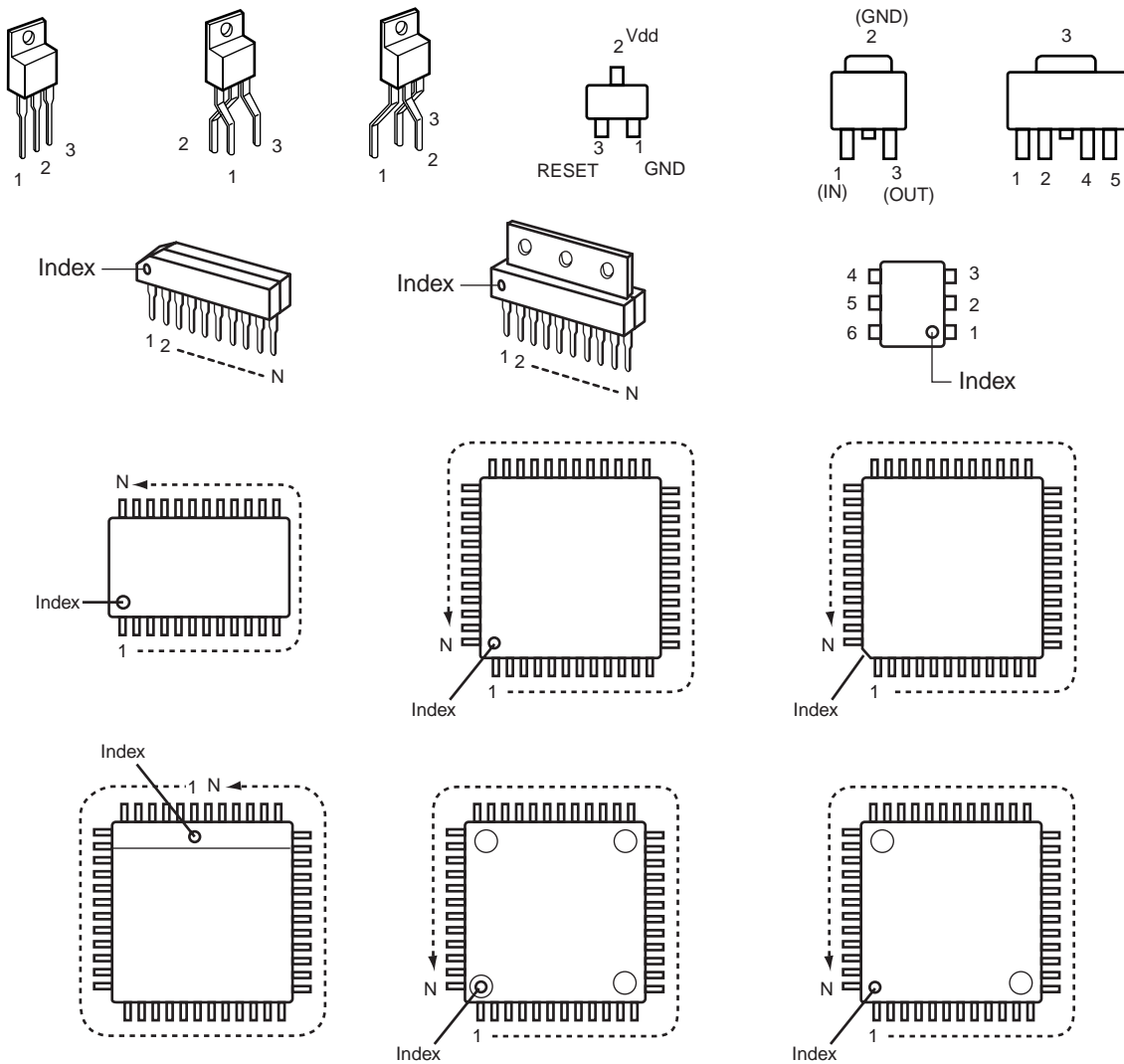
● Diode



● Transistor/FET



● IC



PARTS DESCRIPTION AND READING IN SCHEMATIC DIAGRAM

1. The parts specification of resistors, capacitors and coils are expressed in designated code. Please check the parts description by the following code table.
2. Some of transistors and diodes are indicated in mark for the substitution of parts name. Please check the parts name by the following code table.
3. Voltages and waveforms were taken with a video colour bar signal(1Vp-p at 75 ohms terminated) and controls to normal.
4. Voltages were taken with a high-impedance digital voltmetre.

Capacitor Reading

Example 2000 K K 1000 BG

Example 160 E M 10

Characteristic

Capacitance value

Excepting electric capacitors, all capacitance values of less than 1 are expressed in μF and more than 1 are in pF.

Tolerance

Type

Rated voltage

Material table

Mark	Material
E	Electrolytic
P	Electrolytic (non-Polarised)
C	Ceramic (temperature compensation)
K	Ceramic
F	Polyester
N	Polypropylene
M	Metalised polypropylene
H	Metalised polypropylar
B	Ceramic (semiconductor)
G	Metalised polyester
Y	Composite film
S	Styrol
T	Tantalum oxide solid electrolytic
U	Organic semiconductive electrolyte
D	Electric double layer electrolytic

Tolerance table

Mark	Tolerance
A	not specified
B	± 0.1
C	± 0.25
D	± 0.5
F	± 1
G	± 2
E	± 2.5
H	± 3
J	± 5
K	± 10
M	± 20
N	± 30
P	+100 -0
Q	+30 -10
T	+50 -10
U	+75 -10
V	+20 -10
W	+100 -10
X	+40 -20
Y	+150 -10
Z	+80 -20

Coil Reading

Example L2 C1 4R7 K N

Tolerance

Inductance value

Manufacture code

Unique code

Mark	Tolerance (nH)	Mark	Tolerance (%)
C	± 0.25	G	± 2
D	± 0.5	J	± 5
S	± 0.3	K	± 10
A	± 0.2	L	± 15
		M	± 20

Resistor Reading

Example 1/2 D J 10K B

Example 6 W K 8.2

Example 1/2 C K 1M

Characteristic

Z (Carbon fuse)

B (Non-burnable)

K indicates in K

M indicate in M

Resistance value

Tolerance (see below table)

Material (see below table)

Rated wattage (W)

Note: Resistor which is indicated with resistance value only are 1/6W carbon resistor. Resistor which is indicated with material, tolerance and value are 1/4W rated wattage.

Material table

Mark	Material
D	Carbon
N	Metal film
S	Oxide metal film
C	Solid
G	Metal glaze
W	Wire winding or cement
H	Ceramic
F	Fusible

Tolerance table

Mark	Tolerance
A	± 0.05
B	± 0.1
C	± 0.25
D	± 0.5
F	± 1
G	± 2
J	± 5
K	± 10
M	± 20
P	+5 -15
Z	used in 0 ohm

Diode/Transistor Type Reading

Diode

Mark	Type number
--	1S1555,1S2473,1S2076,1SS133,DS442,1SS176
K	1S1555,1S2473,1S2076,DS442
L	1S1555,1S2076A,1S2471
M	1SS133,1SS176,GMA01
N	1S1555,1S2473,1S2076,1SS133,DS442,1SS176,1N4148
P	1S1555,1S2076A,1S2471,1N4148
R	1S1555,1S2076,1S2473,DS442,1N4148
AA	1S1555,1S2076,1S2473,1SS133,DS442,1SS176,1N4148,GMA01

Transistor (NPN type)

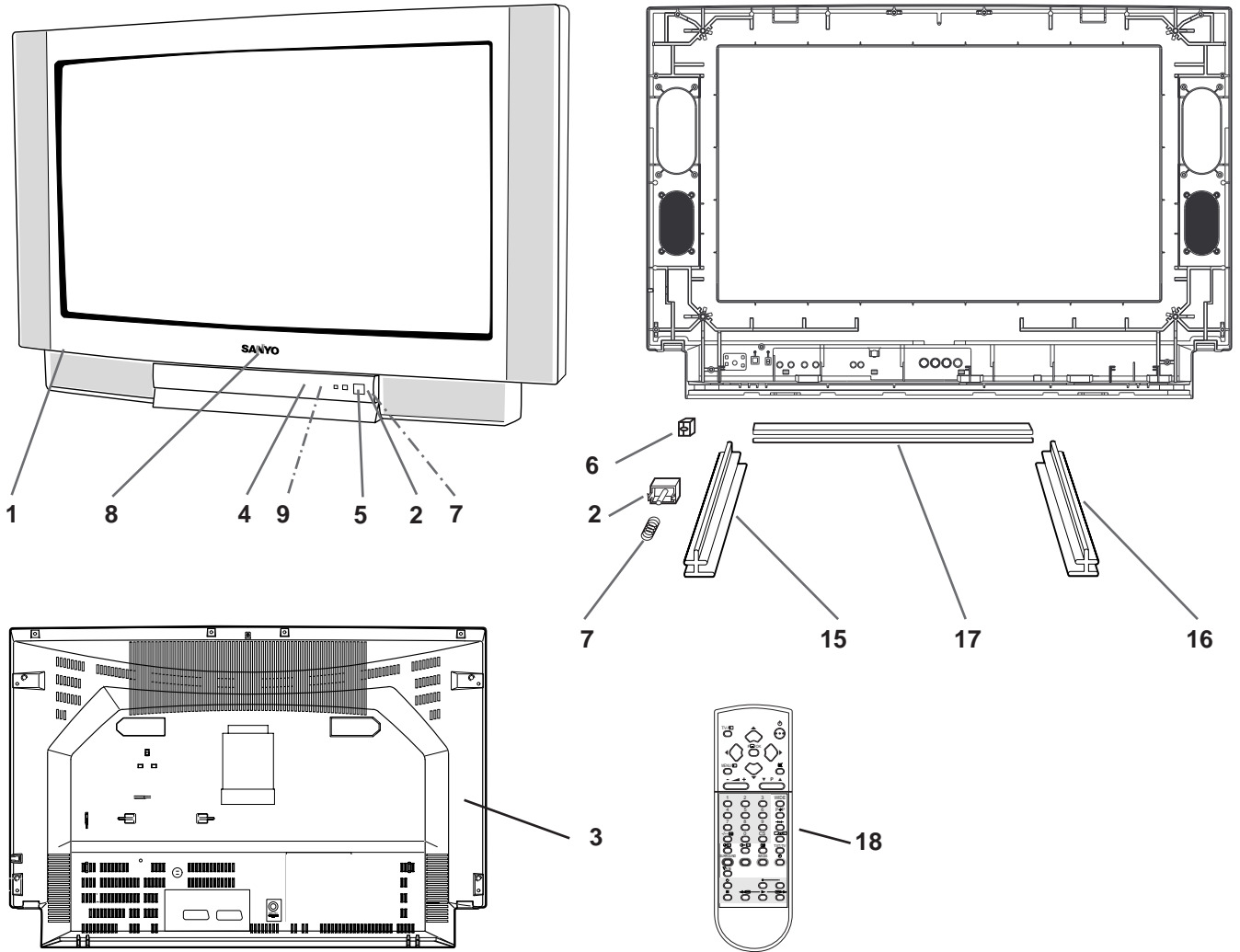
Mark	Type number					
--	2SC536	2SC945A	2SC1815	2SC1740	2SC1740S	KSC945C
A	E, F, G	P, Q, R	O, Y, G	Q, R, S	Q, R, S	
B	E, F, G	P, Q, R	O, Y, G	Q, R, S		
D	F, G	P, Q	Y, G	Q, R, S		
F	F, G	P	G	R, S		
H	F, G	P, Q	Y, G	Q, R, S		Y, G
I	E, F, G	P, Q, R	O, Y, G	Q, R, S		Y, G
G	F, G	P	G	R, S		G
AD	F, G	Q, R	Y, GR		Q, R, S	
AE	E, F, G	Q, R	O, Y, GR		Q, R, S	

Transistor (PNP type)

Mark	Type number					
--	2SA608	2SA564A	2SA1015	2SA933	2SA933S	KSA733C
Y	E, F	Q, R	O, Y, G	Q, R		
W	F	R	Y, G	R		
V	E, F	Q, R	O, Y, G	Q, R		Y, G
U	F	R	Y, G	R		G
Z	E, F	Q, R	O, Y, G	Q, R		Q, R
AB	F	R	Y		Q, R	
AE	E, F	Q, R	O, Y		R	

CABINET PARTS LIST FOR MODEL CE28WN5-B-00

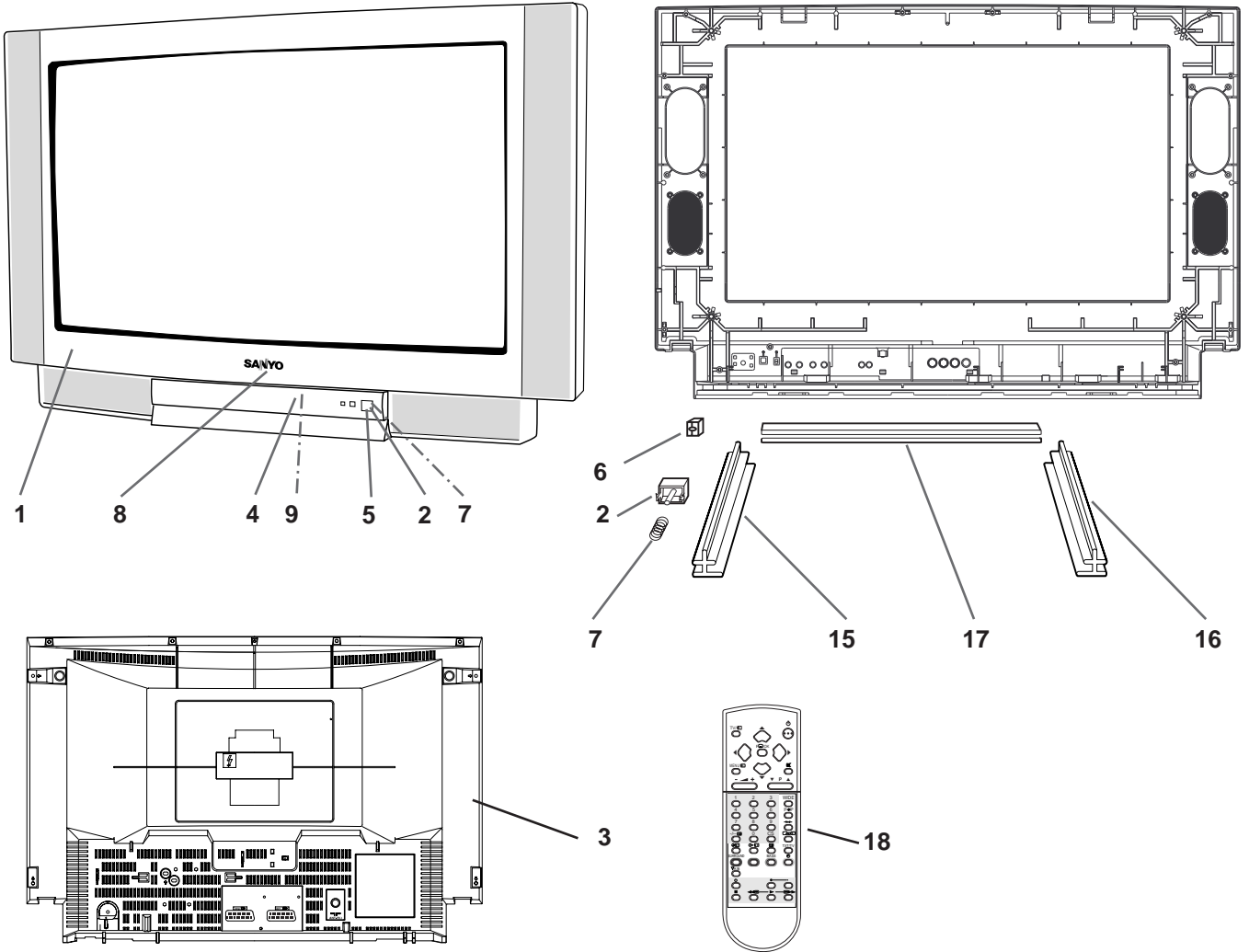
Note: Parts order must contain Service Ref. No., Part No., and descriptions.



Item	Part No.	Description
CABINET PARTS		
1	610 29 09746	CABINET FRONT-C3HA
2	610 277 5518	BUTTON POWER-F7HB
3	610 290 9937	CABINET BACK-C3HA
4	610 290 9760	DOOR- C3HA
5	610 290 9777	DEC IND- C3HA
6	610 253 2449	AC CORD HOLDER- U- D4VA
7	610 261 3032	SPRING- E7GC
8	645 043 5058	BADGE, SANYO*53. 5X12L53. 3
9	610 104 2505	LATCH PUSH, 7. 9X6. 9BK
10	4AA2CN0026A--	CRT CUSHION- B3MY- UK
11	SKZZ0125	CRT SCREW 6 X 27
12	411 076 1301	SCR TPG BRZ 4X14
13	610 260 0131	HOLDER DC GBR- HBZ
14	411 076 1004	SCR TPG BRZ 4X12
15	610 277 6805	CHASSIS RAIL R- F7HS
16	610 277 6812	CHASSIS RAIL L- F7HS
17	610 277 6829	CHASSIS RAIL F- F7HS
ACCESSORIES		
18	JXMFE	RC TRANSMITTER
	610 293 1181	INSTRUCTIONS MANUAL- C3YAV
	SKP10188	QUICK SET UP GUIDE - F7HS
	610 293 8159	TV STAND WST2811

CABINET PARTS LIST FOR MODEL CE32WN5-B-00

Note: Parts order must contain Service Ref. No., Part No., and descriptions.



Item	Part No.	Description
CABINET PARTS		
1	610 291 2463	CABINET FRONT-C3YA
2	610 277 5518	BUTTON POWER-F7HB
3	610 291 2470	CABINET BACK-C3YA
4	610 290 9760	DOOR- C3HA
5	610 290 9777	DEC IND- C3HA
6	610 253 2449	AC CORD HOLDER- U- D4VA
7	610 261 3032	SPRING- E7GC
8	645 043 5058	BADGE, SANYO*53. 5X12L53. 3
9	645 019 2449	LATCH PUSH, 7. 9X6. 9BK
10	610 224 5714	CRT CUSHION- D8CD- UK
11	SKZZ0125	CRT SCREW 6 X 27
12	SFPAN40160SM-	SCR TPG BRZ 4X16
13	610 265 4202	HOLDER DC GBR- F3SC
14	411 076 1004	SCR TPG BRZ 4X12
15	610 286 7756	CHASSIS RAIL R- F7HS- A
16	610 277 6812	CHASSIS RAIL L- F7HS
17	610 277 6829	CHASSIS RAIL F- F7HS
ACCESSORIES		
18	JXMFE	RC TRANSMITTER
	610 293 1181	INSTRUCTIONS MANUAL- C3YAV
	SKP10188	QUICK SET UP GUIDE - F7HS
	610 293 8159	TV STAND WST2811

Ref. No.	Part No.	Description	Ref. No.	Part No.	Description
C1026	403 113 3815	CERAMIC 1000P K 50V	C442	403 083 4109	POLYPRO 0.18U J 400V
C1027	403 233 0817	ELECT 10U M 50V	C443	403 082 7824	POLYPRO 0.18U J 200V
C1028	403 113 3815	CERAMIC 1000P K 50V	C445	403 233 0817	ELECT 10U M 50V
C1029	403 233 0817	ELECT 10U M 50V	C446	403 082 8009	POLYPRO 0.2U J 200V
C103	403 039 3507	ELECT 470U M 6.3V	C450	404 056 5208	NP-ELECT 100NW2R2MTA-6311
C104	403 233 0817	ELECT 10U M 50V	C451	404 063 5703	NP-ELECT 100NW1ROMTA-6311
C106	403 149 9218	CERAMIC 0.01U Z 50V	C463	403 173 8208	POLYESTER 6800P K 100V
C109	403 149 9218	CERAMIC 0.01U Z 50V	C465	403 188 0808	MT-POLYEST 2.2U J 100V
C110	403 149 9218	CERAMIC 0.01U Z 50V	C466	403 188 0808	MT-POLYEST 2.2U J 100V
C121	403 149 9218	CERAMIC 0.01U Z 50V	C468	403 233 1111	ELECT 22U M 50V
C122	403 164 0214	CERAMIC 0.1U Z 25V	C481	403 076 1415	CERAMIC 2700P K 500V
C124	403 157 1518	CER. GRM39COG3ROC50PT	C482	403 159 7409	MT-POLYEST 0.1U K 250V
C125	403 069 8315	CERAMIC 0.01U Z 50V	C501	403 148 0424	ELECT 1000U M 25V
C128	403 241 3817	ELECT 220U M 10V	C502	403 217 1103	ELECT 220U M 35V
C129	403 145 9915	CERAMIC 22P J 50V	C504	403 149 9218	CERAMIC 0.01U Z 50V
C130	403 157 2911	CERAMIC 47P J 50V	C506	403 067 7895	MT-COMPO 0.47 J 50V
C131	403 149 9218	CERAMIC 0.01U Z 50V	C521	403 148 0424	ELECT 1000U M 25V
C135	403 149 9218	CERAMIC 0.01U Z 50V	C523	403 164 0214	CERAMIC 0.1U Z 25V
C136	403 149 9218	CERAMIC 0.01U Z 50V	C526	403 113 3815	CERAMIC 1000P K 50V
C138	403 149 9218	CERAMIC 0.01U Z 50V	C531	403 085 7405	NP-ELECT 10U M 25V
C139	403 237 7941	MT-COMPO 0.22U J 50V	C542	403 164 0214	CERAMIC 0.1U Z 25V
C140	403 233 0817	ELECT 10U M 50V	C603	403 076 7130	CERAMIC 1000P M 1K
C141	403 207 0317	SMD 1MF GRM40Y5V105Z16PT	C604	403 076 7130	CERAMIC 1000P M 1K
C143	401 105 7919	MT-GLAZE 0.000 ZA 1/16W	C605	403 076 7130	CERAMIC 1000P M 1K
C144	403 248 2813	ELECT 2.2U M 50V	C606	403 076 7130	CERAMIC 1000P M 1K
C145	403 149 9218	CERAMIC 0.01U Z 50V	C607	404 044 9904	ELECT 220U M 400V
C146	403 248 1618	ELECT 47U M 16V	C613	403 179 1213	POLYESTER 4700P J 50V
C201	403 149 9218	CERAMIC 0.01U Z 50V	C614	403 237 8057	MT-COMPO 0.1U J 50V
C203	403 269 5916	CERAMIC 0.22U K 16V	C615	403 179 3217	POLYESTER 0.015U J 50V
C204	403 149 9218	CERAMIC 0.01U Z 50V	C616	403 247 2101	CERAMIC 2200P K 2K
C205	403 149 9218	CERAMIC 0.01U Z 50V	C617	403 179 1718	POLYESTER 0.033U J 50V
C206	403 149 9218	CERAMIC 0.01U Z 50V	△ C631	404 073 4505	CERAMIC DE1210-1 E 222M
C207	403 149 9218	CERAMIC 0.01U Z 50V	C633	403 148 0424	ELECT 1000U M 25V
C208	403 248 1618	ELECT 47U M 16V	C636	403 148 0107	ELECT 1000U M 16V
C209	403 164 0214	CERAMIC 0.1U Z 25V	C637	403 158 1309	ELECT 2200U M 35V
C210	403 086 2300	NP-ELECT 1U M 50V	C640	403 218 8200	ELECT 2200U M 25V
C211	403 113 3815	CERAMIC 1000P K 50V	C641	403 076 6727	CERAMIC DE0607-486B102K1K
C212	403 086 2300	NP-ELECT 1U M 50V	C642	404 054 8508	ELECT 270U M 160V
C213	403 233 0817	ELECT 10U M 50V	C643	403 042 4875	ELECT 1000U M 16V
C214	403 149 9218	CERAMIC 0.01U Z 50V	C646	403 148 0424	ELECT 1000U M 25V
C216	403 233 0817	ELECT 10U M 50V	C647	403 157 6810	CERAMIC 680P K 50V
C217	403 160 0020	ELECT 470U M 10V	C648	403 039 3507	ELECT 470U M 6.3V
C218	403 149 9218	CERAMIC 0.01U Z 50V	C649	403 194 4609	ELECT 470U M 16V
C219	403 155 2418	CERAMIC 5600P K 50V	C681	403 148 0424	ELECT 1000U M 25V
C220	403 207 0317	SMD 1MF GRM40Y5V105Z16PT	C682	403 069 9510	CERAMIC CHIP 0.01 Z 50V
C230	403 269 5916	CERAMIC 0.22U K 16V	C683	403 147 9606	ELECT 1000U M 10V
C231	403 113 4119	CERAMIC 2200P K 50V	C684	403 135 7815	ELECT 50MV 3R3 HW+T
C232	403 233 3818	CERAMIC 10P C 50V	C800	403 248 1618	ELECT 47U M 16V
C233	403 248 1618	ELECT 47U M 16V	C801	403 149 9218	CERAMIC 0.01U Z 50V
C234	403 164 0214	CERAMIC 0.1U Z 25V	C806	403 248 1618	ELECT 47U M 16V
C235	403 164 0214	CERAMIC 0.1U Z 25V	C807	403 164 0214	CERAMIC 0.1U Z 25V
C236	403 164 0214	CERAMIC 0.1U Z 25V	C810	403 269 5916	CERAMIC 0.22U K 16V
C237	403 164 0214	CERAMIC 0.1U Z 25V	C811	403 269 5916	CERAMIC 0.22U K 16V
C240	403 113 4119	CERAMIC 2200P K 50V	C812	403 157 4212	CERAMIC 220P J 50V
C241	403 067 7895	MT-COMPO 0.47 J 50V	C814	403 155 2210	CERAMIC 3300P K 50V
C242	403 257 0817	ELECT 0.47U M 50V	C816	403 155 2319	CERAMIC 4700P K 50V
C243	403 069 5611	CERAMIC 0.01U K 50V	C817	403 145 9915	CERAMIC 22P J 50V
C247	403 233 0817	ELECT 10U M 50V	C818	403 155 2319	CERAMIC 4700P K 50V
C251	403 314 5915	SMD CAP GRM40X5R474K16	C819	403 145 9915	CERAMIC 22P J 50V
C252	403 314 5915	SMD CAP GRM40X5R474K16	C822	403 113 4119	CERAMIC 2200P K 50V
C421	404 077 4907	MT-POLYPRO 8200P H 1.5K	C824	403 153 9310	CERAMIC 82P J 50V
C422	403 083 9807	POLYPRO 0.018U J 630V	C826	403 086 1808	NP-ELECT 0.47U M 50V
C423	404 077 4402	MT-POLYPRO ECWH20722HVBA PANA	C827	403 314 5915	SMD CAP GRM40X7R474K16
C424	403 083 9302	POLYPRO 0.015U J 630V	C828	403 149 9218	CERAMIC 0.01U Z 50V
C431	403 068 5612	CERAMIC 0.056U Z 25V	C829	403 248 1618	ELECT 47U M 16V
C432	403 076 3617	CERAMIC 470P K 500V	C830	403 157 6711	CERAMIC 560P K 50V
C433	403 076 0517	CERAMIC 2200P K 500V	C831	403 164 0214	CERAMIC 0.1U Z 25V
C434	403 178 8807	ELECT 33U M 100V	C832	403 248 1618	ELECT 47U M 16V
C437	403 066 6106	MT-POLYEST 0.47U J 250V	C833	403 157 2515	CERAMIC 27P J 50V
C441	403 083 4109	POLYPRO 0.18U J 400V	C834	403 157 2515	CERAMIC 27P J 50V

Ref. No.	Part No.	Description	Ref. No.	Part No.	Description
C835	403 155 2319	CERAMIC 4700P K 50V	INTERGRATED CIRCUITS		
DIODE			IC001	409 301 4906	IC TDA7263M
D1001	407 063 8319	ZENER DIODE MFZJ11C	IC001-1	610 283 0781	ASSY, AUDIO HEAT SINK C2HC
D1002	407 063 8319	ZENER DIODE MFZJ11C	IC201	409 490 4701	IC TB1251BN VER 5.3
D1003	407 063 8319	ZENER DIODE MFZJ11C	IC501	409 374 0607	IC LA7846N
D1004	407 063 8319	ZENER DIODE MFZJ11C	IC501-1	610 282 6630	ASSY, FRAME HEAT SINK C2HC
D1007	407 063 8319	ZENER DIODE MFZJ11C	IC641	409 241 5407	IC BA178M05T
D1008	407 063 8319	ZENER DIODE MFZJ11C	IC642	409 377 5401	IC L78M09CV ST
D1009	407 063 8319	ZENER DIODE MFZJ11C	IC801	410 329 1600	IC ST92R195
D101	407 100 0214	ZENER DIODE MFZJ36A	IC802	AAJQ0213G-	C2HAL VP/P E57F
D1010	407 063 8319	ZENER DIODE MFZJ11C		403 374 0108	IC PROM 77E6
D1011	407 012 4416	DIODE 1SS133-T-77	IC803	409 343 6302	IC 24LC04B/P
D1012	407 012 4416	DIODE 1SS133-T-77	TRANSFORMER		
D1013	407 012 4416	DIODE 1SS133-T-77	T431	610 000 1138	DRIVE TRANS
D1020	407 063 8319	ZENER DIODE MFZJ11C	△T451	645 038 7210	TRANS, FLYBACK
D1021	407 063 8319	ZENER DIODE MFZJ11C	△T611	645 041 2264	TRANS, POWER, PULSE SMT4B
D1022	407 063 8319	ZENER DIODE MFZJ11C	△T681	610 033 3758	POWER TRANS
D1023	407 063 8319	ZENER DIODE MFZJ11C	COIL		
D1024	407 063 8319	ZENER DIODE MFZJ11C	L1003	610 078 5946	PIPE CORE
D1025	407 063 8319	ZENER DIODE MFZJ11C	L1010	645 001 4550	PEAKING COIL 10UHK
D1026	407 063 8319	ZENER DIODE MFZJ11C	L1011	645 001 4550	PEAKING COIL 10UHK
D1905	401 024 9325	CARBON 1K2 JA 1/6W	L1012	645 001 4550	PEAKING COIL 10UHK
D1906	407 063 9514	ZENER DIODE	L1013	645 001 4550	PEAKING COIL 10UHK
D240	407 012 4416	DIODE 1SS133-T-77	L1017	610 078 5946	PIPE CORE
D241	407 012 4416	DIODE 1SS133-T-77	L1020	645 001 4550	PEAKING COIL 10UHK
D242	407 012 4416	DIODE 1SS133-T-77	L1021	645 001 4550	PEAKING COIL 10UHK
D431	407 063 9613	ZENER DIODE MFZJ9. 1A	L1022	645 001 4550	PEAKING COIL 10UHK
△D438	407 095 8001	DIODE ERD07- 15L	L1023	645 001 4550	PEAKING COIL 10UHK
D439	407 006 4128	DIODE ERB44- 04V1	L121	645 001 4635	PEAKING COIL 15UH K
D441	407 104 2402	PHOTO COUPLE PC817C	L122	645 002 1459	PEAKING COIL
D442	408 007 8607	DIODE 1N4148	L123	401 016 9821	CARBON 27JA 1/4W FLAM-RET
D445	407 012 4416	DIODE 1SS133-T-77	L171	645 040 2715	TRANS, OSC 38.9MHZ
D446	407 063 9415	ZENER DIODE MFZJ8. 2A	L240	645 001 4550	PEAKING COIL 10UHK
D461	407 012 4416	DIODE 1SS133-T-77	L241	645 001 4550	PEAKING COIL 10UHK
D463	407 012 4416	DIODE 1SS133-T-77	L242	645 001 4550	PEAKING COIL 10UHK
D465	403 179 1718	POLYESTER 0.033U J 50V	L431	610 032 4381	FILTER COIL
D466	407 099 7812	ZENER DIODE MFZJT-77- 20A	L441	645 030 2879	COIL, LINEARITY
D469	407 007 7415	DIODE EU1	L443	610 211 3471	INDUCTOR
D481	407 007 7415	DIODE EU1	L461	645 005 5645	INDUCTOR 222UH K
D482	407 012 4416	DIODE 1SS133-T-77	L462	645 033 2685	INDUCTOR, 484UH
D501	407 005 7328	DIODE EMO1Z	L501	645 008 5642	INDUCTOR, 3.3U K
D603	407 009 6921	DIODE RM11C	L607	610 237 1000	PIPE CORE
D604	407 009 6921	DIODE RM11C	L608	610 237 1000	PIPE CORE
D605	407 009 6921	DIODE RM11C	L611	640 031 1577	INDUCTOR, 22U K
D606	407 009 6921	DIODE RM11C	L641	610 078 6820	PIPE CORE
D613	407 012 4416	DIODE 1SS133-T-77	L645	645 007 8194	INDUCTOR 120UH SUGAMI
D614	408 007 8607	DIODE 1N4148	L646	645 007 8194	INDUCTOR 120UH SUGAMI
△D615	407 173 2907	PHOTO COUPLE PC123F2	L801	645 003 8549	PEAKING COIL
D616	408 007 8607	DIODE 1N4148	L802	645 003 8549	PEAKING COIL
D617	407 007 6616	DIODE ES1	L803	645 003 8549	PEAKING COIL
D618	408 007 8607	DIODE 1N4148	L804	645 003 8549	PEAKING COIL
D619	407 063 8319	ZENER DIODE MFZJ11C	L805	645 003 8549	PEAKING COIL
D630	407 106 2806	DIODE RU3YX	TRANSISTOR		
D631	407 106 2806	DIODE RU3YX	Q001	405 014 4519	TR 2SC2412KT146/R
D633	407 166 2303	DIODE ERC-91-02L	Q1001	405 014 4519	TR 2SC2412KT146/R
D634	407 106 2806	DIODE RU3YX	Q1002	405 002 0318	TR 2SA1037K-T96-R
△D635	407 129 6706	DIODE RU4YX LF-L1	Q1003	405 014 4519	TR 2SC2412KT146/R
D637	407 012 4416	DIODE 1SS133-T-77	Q1006	405 002 0318	TR 2SA1037K-T96-R
D641	407 012 4416	DIODE 1SS133-T-77	Q1007	405 002 0318	TR 2SA1037K-T96-R
△D642	407 129 7000	DIODE RU4AM LF-L1	Q1008	405 002 0318	TR 2SA1037K-T96-R
D643	407 012 4416	DIODE 1SS133-T-77	Q1010	405 014 4519	TR 2SC2412KT146/R
D645	407 099 5511	ZENER DIODE MFZJ6. 2C	Q1011	405 014 4519	TR 2SC2412KT146/R
D681	407 005 7328	DIODE EMO1Z	Q121	405 014 4519	TR 2SC2412KT146/R
D682	407 063 8913	ZENER DIODE MFZJ5. 6C	Q122	405 014 4519	TR 2SC2412KT146/R
D683	407 005 7328	DIODE EMO1Z	Q131	405 002 0318	TR 2SA1037K-T96-R
D684	408 007 8607	DIODE 1N4148	Q132	405 002 0318	TR 2SA1037K-T96-R
D685	407 012 4416	DIODE 1SS133-T-77	Q133	405 014 4519	TR 2SC2412KT146/R
D826	407 099 4811	ZENER DIODE MFZJ4. 3B			
D831	407 012 4416	DIODE 1SS133-T-77			

Ref. No.	Part No.	Description	Ref. No.	Part No.	Description
Q141	405 015 9721	TR 2SC2814-F4-TB	R1018	401 027 6628	CARBON 75 JA 1/6W
Q153	405 002 0318	TR 2SA1037K-T96-R	R1019	401 027 6628	CARBON 75 JA 1/6W
Q1901	405 002 0318	TR 2SA1037K-T96-R	R102	401 105 0415	MT-GLAZE 100 JA 1/16W
Q1902	405 014 4519	TR 2SC2412KT146/R	R1020	401 105 2815	MT-GLAZE 2.2K JA 1/16W
Q241	405 014 4519	TR 2SC2412KT146/R	R1021	401 105 2815	MT-GLAZE 2.2K JA 1/16W
Q242	405 002 0318	TR 2SA1037K-T96-R	R1022	401 105 5915	MT-GLAZE 560 JA 1/16W
Q243	405 002 0318	TR 2SA1037K-T96-R	R1023	401 105 5915	MT-GLAZE 560 JA 1/16W
Q244	405 002 0318	TR 2SA1037K-T96-R	R1024	401 105 2914	MT-GLAZE 22K JA 1/16W
Q431	405 029 7106	TR 2SC2271-D	R1025	401 105 5311	MT-GLAZE 4.7K JA 1/16W
Q432	405 144 2307	TR 2SD2580-YB	R1026	401 105 0415	MT-GLAZE 100 JA 1/16W
Q432-1	610 251 5893	POW HEAT SINK E7LC	R1027	401 105 0514	MT-GLAZE 1K JA 1/16W
Q451	406 012 1408	TR 2SK2010-CTV-YA14	R1028	401 105 4017	MT-GLAZE 330 JA 1/16W
Q461	405 064 7307	TR 2SB1274-Q-RA	R1029	401 105 2914	MT-GLAZE 22K JA 1/16W
Q461-1	610 277 4726	HEAT SINK PCC F6FE	R1030	401 105 1511	MT-GLAZE 1.5K JA 1/16W
Q462	405 039 3303	TR 2SC3114-R	△ R103	401 061 4400	OXIDE-MT 3K JA 1W
Q491	405 014 4519	TR 2SC2412KT146/R	R124	401 105 3317	MT-GLAZE 2.7K JA 1/16W
Q521	405 014 4519	TR 2SC2412KT146/R	R126	401 105 4017	MT-GLAZE 330 JA 1/16W
Q522	405 014 4519	TR 2SC2412KT146/R	R127	401 105 5915	MT-GLAZE 560 JA 1/16W
Q531	405 002 0318	TR 2SA1037K-T96-R	R128	401 105 0514	MT-GLAZE 1K JA 1/16W
Q611	406 007 1901	TR JC556A	R129	401 105 0514	MT-GLAZE 1K JA 1/16W
Q612	405 058 0208	TR 2SC3807-R-CTV-YA	R130	401 105 0514	MT-GLAZE 1K JA 1/16W
Q613	405 095 0407	TR 2SC4429-L-YB	R132	401 105 0514	MT-GLAZE 1K JA 1/16W
Q613-1	610 252 1108	H HEAT SINK E7LC	R133	401 105 0514	MT-GLAZE 1K JA 1/16W
Q641	405 014 4519	TR 2SC2412KT146/R	R134	401 105 0514	MT-GLAZE 1K JA 1/16W
Q652	405 014 4519	TR 2SC2412KT146/R	R135	401 105 5212	MT-GLAZE 470 JA 1/16W
Q681	405 059 9804	TR 2SD1913-Q-RA	R136	401 105 0415	MT-GLAZE 100 JA 1/16W
Q682	405 002 0318	TR 2SA1037K-T96-R	R137	401 105 5212	MT-GLAZE 470 JA 1/16W
Q803	405 014 4519	TR 2SC2412KT146/R	R138	401 105 5212	MT-GLAZE 470 JA 1/16W
Q804	405 014 4519	TR 2SC2412KT146/R	R139	401 105 3119	MT-GLAZE 27 JA 1/16W
Q805	405 014 4519	TR 2SC2412KT146/R	R140	401 105 7919	MT-GLAZE 0.000 ZA 1/16W
Q806	405 014 4519	TR 2SC2412KT146/R	R141	401 105 6011	MT-GLAZE 5.6K JA 1/16W
Q807	405 002 0318	TR 2SA1037K-T96-R	R142	401 105 0514	MT-GLAZE 1K JA 1/16W
Q808	405 014 4519	TR 2SC2412KT146/R	R143	401 105 7919	MT-GLAZE 0.000 ZA 1/16W
Q810	405 014 4519	TR 2SC2412KT146/R	R144	401 105 2716	MT-GLAZE 220 JA 1/16W
RESISTOR			R149	401 027 2125	CARBON 56 JA 1/6W
R001	401 024 7024	CARBON 1K JA 1/6W	R153	401 105 5212	MT-GLAZE 470 JA 1/16W
R002	401 105 2013	MT-GLAZE 1.8K JA 1/16W	R157	401 105 0613	MT-GLAZE 10K JA 1/16W
R003	401 024 7024	CARBON 1K JA 1/6W	R158	401 105 4710	MT-GLAZE 39K JA 1/16W
R004	401 105 2013	MT-GLAZE 1.8K JA 1/16W	R1907	401 026 9620	CARBON 470 JA 1/6W
R005	401 026 9323	CARBON 47 JA 1/6W	R1908	401 105 7919	MT-GLAZE 0.000 ZA 1/16W
R006	401 025 1625	CARBON 1K5 JA 1/6W	R1909	401 105 7919	MT-GLAZE 0.000 ZA 1/16W
R007	401 026 9323	CARBON 47 JA 1/6W	R1910	401 024 7430	CARBON 10K JA 1/6W
R008	401 025 1625	CARBON 1K5 JA 1/6W	R1912	401 105 7919	MT-GLAZE 0.000 ZA 1/16W
R009	401 026 8128	CARBON 4.7 JA 1/6W	R1916	401 105 0514	MT-GLAZE 1K JA 1/16W
R010	401 026 8128	CARBON 4.7 JA 1/6W	R1917	401 105 6516	MT-GLAZE 680 JA 1/16W
R013	401 105 0514	MT-GLAZE 1K JA 1/16W	R201	401 105 1412	MT-GLAZE 150 JA 1/16W
R014	401 022 1935	CARBON 680 JA 1/4W	R202	401 105 3416	MT-GLAZE 27K JA 1/16W
R015	401 025 7429	CARBON 220 JA 1/6W	R211	401 105 0415	MT-GLAZE 100 JA 1/16W
R016	401 022 1935	CARBON 680 JA 1/4W	R212	401 026 0627	CARBON 270 JA 1/6W
R018	401 105 0613	MT-GLAZE 10K JA 1/16W	R213	401 105 3010	MT-GLAZE 220K JA 1/16W
R021	401 105 0514	MT-GLAZE 1K JA 1/16W	R214	401 105 0415	MT-GLAZE 100 JA 1/16W
R022	401 105 5410	MT-GLAZE 47K JA 1/16W	R215	401 105 0415	MT-GLAZE 100 JA 1/16W
R1001	401 105 4710	MT-GLAZE 39K JA 1/16W	R216	401 105 0613	MT-GLAZE 10K JA 1/16W
R1002	401 027 6628	CARBON 75 JA 1/6W	R217	401 024 7430	CARBON 10K JA 1/6W
R1003	401 027 6628	CARBON 75 JA 1/6W	R230	401 105 4215	MT-GLAZE 33K JA 1/16W
R1005	401 027 6628	CARBON 75 JA 1/6W	R234	401 024 6720	CARBON 100 JA 1/6W
R1006	401 105 5212	MT-GLAZE 470 JA 1/16W	R235	401 024 6720	CARBON 100 JA 1/6W
R1007	401 027 6628	CARBON 75 JA 1/6W	R236	401 024 6720	CARBON 100 JA 1/6W
R1008	401 105 5212	MT-GLAZE 470 JA 1/16W	R237	401 024 6720	CARBON 100 JA 1/6W
R1009	401 027 6628	CARBON 75 JA 1/6W	R238	401 105 0415	MT-GLAZE 100 JA 1/16W
R101	401 105 0415	MT-GLAZE 100 JA 1/16W	R239	401 105 2815	MT-GLAZE 2.2K JA 1/16W
R1010	401 105 5212	MT-GLAZE 470 JA 1/16W	R240	401 105 0415	MT-GLAZE 100 JA 1/16W
R1011	401 027 6628	CARBON 75 JA 1/6W	R241	401 105 2815	MT-GLAZE 2.2K JA 1/16W
R1012	401 105 2815	MT-GLAZE 2.2K JA 1/16W	R242	401 105 0415	MT-GLAZE 100 JA 1/16W
R1013	401 105 2815	MT-GLAZE 2.2K JA 1/16W	R243	401 105 2815	MT-GLAZE 2.2K JA 1/16W
R1014	401 105 5915	MT-GLAZE 560 JA 1/16W	R245	401 218 4614	MT-GLAZE 5.6K FA 1/16W
R1015	401 105 5915	MT-GLAZE 560 JA 1/16W	R246	401 105 4710	MT-GLAZE 39K JA 1/16W
R1016	401 026 7428	CARBON 39K JA 1/6W	R247	401 105 7919	MT-GLAZE 0.000 ZA 1/16W
R1017	401 027 6628	CARBON 75 JA 1/6W	R248	401 105 7513	MT-GLAZE 82K JA 1/16W
			R249	401 024 7430	CARBON 10K JA 1/6W

Ref. No.	Part No.	Description	Ref. No.	Part No.	Description
R250	401 105 0613	MT- GLAZE 10K JA 1/16W	R544	401 105 4314	MT- GLAZE 330K JA 1/16W
R251	401 105 1214	MT- GLAZE 120K JA 1/16W	R545	401 105 6615	MT- GLAZE 6. 8K JA 1/16W
R253	401 024 7727	CARBON 100K JA 1/6W	△ R602	402 075 2109	WI RE W. SYK05DW1R8K JRM
R254	401 105 0712	MT- GLAZE 100K JA 1/16W	R611	401 027 2620	CARBON 5K6 JA 1/6W
R255	401 105 8114	MT- GLAZE 56K JA 1/16W	R612	401 026 9620	CARBON 470 JA 1/6W
R256	401 105 0514	MT- GLAZE 1K JA 1/16W	R615	401 025 8228	CARBON 22K JA 1/6W
R257	401 105 0514	MT- GLAZE 1K JA 1/16W	R617	401 024 7024	CARBON 1K JA 1/6W
R258	401 105 0514	MT- GLAZE 1K JA 1/16W	R619	401 019 9640	CARBON 47 JA 1/4W
△ R430	401 068 0207	OXI DE- MT 3. 9K JA 2W	R620	401 007 5815	CARBON 120K JA 1/2W
R432	401 105 0514	MT- GLAZE 1K JA 1/16W	R621	401 007 5815	CARBON 120K JA 1/2W
R433	401 010 8325	CARBON 5. 6K JA 1/2W	R622	401 014 5241	CARBON 15K JA 1/4W
R434	401 105 0415	MT- GLAZE 100 JA 1/16W	R623	401 025 1625	CARBON 1K5 JA 1/6W
△ R435	402 066 4105	WI RE WOUND 4. 7 KA 7W	△ R624	401 068 2607	OXI DE- MT 47 JA 2W
R436	401 021 3049	CARBON 5. 6K JA 1/4W	△ R625	401 066 5204	OXI DE- MT 22 JA 2W
R437	401 026 3925	CARBON 330 JA 1/6W	R626	401 015 9307	CARBON 2K JA 1/4W
R440	401 018 9839	CARBON 39 JA 1/4W	△ R627	401 066 5204	OXI DE- MT 22 JA 2W
△ R441	401 058 3706	OXI DE- MT 1K JA 1W	△ R628	401 068 2607	OXI DE- MT 47 JA 2W
△ R442	401 065 2808	OXI DE- MT 120 JA 2W	△ R631	402 000 8602	SOLID 5. 6M KA 1/2W
R443	401 007 2319	CARBON 100K JA 1/2W	△ R632	402 000 8602	SOLID 5. 6M KA 1/2W
R444	401 024 7430	CARBON 10K JA 1/6W	R633	401 007 6921	CAR RES 15 JA
R445	401 024 6720	CARBON 100 JA 1/6W	△ R634	401 061 1706	OXI DE- MT 33 JA 1W
R446	401 021 3049	CARBON 5. 6K JA 1/4W	△ R638	402 069 9800	WI RE WOUND 2. 7 KA 5W
R447	401 026 9927	CARBON 4K7 JA 1/6W	R641	401 027 2620	CARBON 5K6 JA 1/6W
R448	401 009 5843	CARBON 330 JA 1/2W	R642	401 013 7335	CARBON 120K JA 1/4W
△ R449	401 068 0207	OXI DE- MT 3. 9K JA 2W	△ R643	401 065 1801	OXI DE- MT 12 JA 2W
R450	401 025 1922	CARBON 15K JA 1/6W	△ R644	401 061 0006	OXI DE- MT 3. 3 JA 1W
△ R451	401 068 6209	OXI DE- MT 5. 6 JA 2W	R645	401 016 4836	CARBON 22K JA 1/4W
R453	401 024 7024	CARBON 1K JA 1/6W	R646	401 014 6149	CARBON 150K JA 1/4W
R454	401 014 6149	CARBON 150K JA 1/4W	R647	401 010 8919	CARBON 56K JA 1/2W
R455	401 019 4031	CARBON 390K JA 1/4W	R648	401 027 0329	CARBON 47K JA 1/6W
R461	401 105 7919	MT- GLAZE 0. 000 ZA 1/16W	R653	401 105 2914	MT- GLAZE 22K JA 1/16W
R462	401 105 7919	MT- GLAZE 0. 000 ZA 1/16W	R654	401 105 0613	MT- GLAZE 10K JA 1/16W
R463	401 025 7825	CARBON 2K2 JA 1/6W	R681	401 008 1628	CARBON 1K8 JA 1/2W
R464	401 025 7825	CARBON 2K2 JA 1/6W	△ R682	401 066 5204	OXI DE- MT 22 JA 2W
R465	401 026 9323	CARBON 47 JA 1/6W	R684	401 027 8622	CARBON 8K2 JA 1/6W
R466	401 008 4510	CARBON 2. 7 JB 1/2W	R685	401 025 8228	CARBON 22K JA 1/6W
R469	401 026 1327	CARBON 27K JA 1/6W	R801	401 105 5410	MT- GLAZE 47K JA 1/16W
R470	401 024 7727	CARBON 100K JA 1/6W	R802	401 105 0613	MT- GLAZE 10K JA 1/16W
R473	401 027 5225	CARBON 680 JA 1/6W	R804	401 105 0613	MT- GLAZE 10K JA 1/16W
R474	401 011 5541	CARBON 820 JA 1/2W	R805	401 105 6011	MT- GLAZE 5. 6K JA 1/16W
R481	401 016 5843	CARBON 220K JA 1/4W	R806	401 105 0613	MT- GLAZE 10K JA 1/16W
R482	401 027 5522	CARBON 6K8 JA 1/6W	R807	401 105 0613	MT- GLAZE 10K JA 1/16W
R491	401 105 4116	MT- GLAZE 3. 3K JA 1/16W	R808	401 024 6720	CARBON 100 JA 1/6W
R492	401 105 0613	MT- GLAZE 10K JA 1/16W	R809	401 105 0613	MT- GLAZE 10K JA 1/16W
△ R502	402 063 3309	FUSI BLE RES 1. 5 J- 1/4W	R810	401 105 7919	MT- GLAZE 0. 000 ZA 1/16W
R503	401 105 1610	MT- GLAZE 15K JA 1/16W	R811	401 105 0415	MT- GLAZE 100 JA 1/16W
△ R510	401 101 5800	OXI DE- MT . 68 JA 2W	R812	401 105 0415	MT- GLAZE 100 JA 1/16W
△ R512	401 062 1200	OXI DE- MT 470 JA 1W	R813	401 105 0415	MT- GLAZE 100 JA 1/16W
△ R513	401 062 1200	OXI DE- MT 470 JA 1W	R814	401 105 0415	MT- GLAZE 100 JA 1/16W
△ R515A	402 002 4206	FUSI BLE RES 3. 3 J- 1W	R815	401 105 0415	MT- GLAZE 100 JA 1/16W
△ R517	401 105 5311	MT- GLAZE 4. 7K JA 1/16W	R817	401 105 7919	MT- GLAZE 0. 000 ZA 1/16W
R519	401 105 8015	MT- GLAZE 1M JA 1/16W	R818	401 105 5410	MT- GLAZE 47K JA 1/16W
△ R521	401 067 2509	OXI DE- MT 3. 3 JA 2W	R819	401 026 9927	CARBON 4K7 JA 1/6W
R522	401 105 5311	MT- GLAZE 4. 7K JA 1/16W	R820	401 105 4215	MT- GLAZE 33K JA 1/16W
R523	401 105 0514	MT- GLAZE 1K JA 1/16W	R822	401 105 0613	MT- GLAZE 10K JA 1/16W
R526	401 105 5915	MT- GLAZE 560 JA 1/16W	R823	401 105 0415	MT- GLAZE 100 JA 1/16W
R527	401 105 0514	MT- GLAZE 1K JA 1/16W	R826	401 105 0613	MT- GLAZE 10K JA 1/16W
R528	401 105 6516	MT- GLAZE 680 JA 1/16W	R828	401 027 3023	CARBON 56K JA 1/6W
R529	401 105 0514	MT- GLAZE 1K JA 1/16W	R829	401 105 4215	MT- GLAZE 33K JA 1/16W
R530	401 105 4116	MT- GLAZE 3. 3K JA 1/16W	R830	401 105 4215	MT- GLAZE 33K JA 1/16W
R531	401 105 5311	MT- GLAZE 4. 7K JA 1/16W	R831	401 105 0613	MT- GLAZE 10K JA 1/16W
R532	401 105 7919	MT- GLAZE 0. 000 ZA 1/16W	R832	401 105 0613	MT- GLAZE 10K JA 1/16W
R534	401 053 4718	MT- FILM 6K8 FA 1/6W	R833	401 105 0613	MT- GLAZE 10K JA 1/16W
R537	401 105 6615	MT- GLAZE 6. 8K JA 1/16W	R836	401 105 6615	MT- GLAZE 6. 8K JA 1/16W
R542	401 105 6011	MT- GLAZE 5. 6K JA 1/16W	R837	401 105 6011	MT- GLAZE 5. 6K JA 1/16W
R543	401 105 3218	MT- GLAZE 270 JA 1/16W	R838	401 105 6011	MT- GLAZE 5. 6K JA 1/16W

Ref. No.	Part No.	Description	Ref. No.	Part No.	Description
R839	401 105 6011	MT-GLAZE 5. 6K JA 1/16W	J340	401 105 7919	MT-GLAZE 0. 000 ZA 1/16W
R840	401 105 0514	MT-GLAZE 1K JA 1/16W	J344	401 105 7919	MT-GLAZE 0. 000 ZA 1/16W
R842	401 105 1610	MT-GLAZE 15K JA 1/16W	J346	401 105 7919	MT-GLAZE 0. 000 ZA 1/16W
R843	401 105 2716	MT-GLAZE 220 JA 1/16W	J416	401 105 7919	MT-GLAZE 0. 000 ZA 1/16W
R844	401 105 2716	MT-GLAZE 220 JA 1/16W	J434	401 105 7919	MT-GLAZE 0. 000 ZA 1/16W
R845	401 105 2716	MT-GLAZE 220 JA 1/16W	J442	401 105 7919	MT-GLAZE 0. 000 ZA 1/16W
R846	401 105 0415	MT-GLAZE 100 JA 1/16W	J454	401 105 7919	MT-GLAZE 0. 000 ZA 1/16W
R847	401 105 3317	MT-GLAZE 2. 7K JA 1/16W	J456	401 105 7919	MT-GLAZE 0. 000 ZA 1/16W
R848	401 105 3317	MT-GLAZE 2. 7K JA 1/16W	J500	401 105 7919	MT-GLAZE 0. 000 ZA 1/16W
R849	401 105 3317	MT-GLAZE 2. 7K JA 1/16W	J508	401 105 7919	MT-GLAZE 0. 000 ZA 1/16W
R850	401 105 0514	MT-GLAZE 1K JA 1/16W	J525	401 105 7919	MT-GLAZE 0. 000 ZA 1/16W
R851	401 105 2815	MT-GLAZE 2. 2K JA 1/16W	J617	401 105 7919	MT-GLAZE 0. 000 ZA 1/16W
R852	401 105 3416	MT-GLAZE 27K JA 1/16W	J623	401 105 7919	MT-GLAZE 0. 000 ZA 1/16W
R853	401 105 2914	MT-GLAZE 22K JA 1/16W	J629	401 105 7919	MT-GLAZE 0. 000 ZA 1/16W
R854	401 105 5311	MT-GLAZE 4. 7K JA 1/16W	J631	401 105 7919	MT-GLAZE 0. 000 ZA 1/16W
R855	401 105 0613	MT-GLAZE 10K JA 1/16W	KA	645 005 6567	PLUG, 7P
R856	401 105 6011	MT-GLAZE 5. 6K JA 1/16W	KCPA	645 006 1905	HSG PLUG 5P S5B-XH-A JST
R857	401 105 4215	MT-GLAZE 33K JA 1/16W	KDY-1	645 008 4058	TERMINAL PLUG
R858	401 026 3925	CARBON 330 JA 1/6W	KDY-3	645 008 4058	TERMINAL PLUG
R859	401 105 5915	MT-GLAZE 560 JA 1/16W	KDY-5	645 008 4058	TERMINAL PLUG
R861	401 105 6516	MT-GLAZE 680 JA 1/16W	KDY-6	645 008 4058	TERMINAL PLUG
R862	401 105 7414	MT-GLAZE 8. 2K JA 1/16W	KEM1	645 008 4058	TERMINAL PLUG
R863	401 105 1610	MT-GLAZE 15K JA 1/16W	KF-1	645 008 4058	TERMINAL PLUG
R864	401 105 4017	MT-GLAZE 330 JA 1/16W	KF-2	645 008 4058	TERMINAL PLUG
R872	401 105 0613	MT-GLAZE 10K JA 1/16W	KG	645 004 2942	PLUG, 8P
R873	401 105 0613	MT-GLAZE 10K JA 1/16W	KGG-1	645 008 4058	TERMINAL PLUG
R874	401 026 9620	CARBON 470 JA 1/6W	KGG-1	645 008 4058	TERMINAL PLUG
R875	401 026 9620	CARBON 470 JA 1/6W	KJ	645 040 4627	SOCKET, PWB-PWB 15P
R876	401 024 7430	CARBON 10K JA 1/6W	KM	645 032 1924	SOCKET, PWB-PWB 20P
R877	401 027 0329	CARBON 47K JA 1/6W	KN	645 004 2942	PLUG, 8P
R878	401 024 7430	CARBON 10K JA 1/6W	KP	645 008 7288	HOUSING PLUG 5P
R879	401 105 0613	MT-GLAZE 10K JA 1/16W	KQ	645 008 7264	HOUSING PLUG 3P
R880	401 105 4710	MT-GLAZE 39K JA 1/16W	KU	645 014 2093	PLUG, 5P
R881	401 105 0514	MT-GLAZE 1K JA 1/16W	K1001	645 005 5867	21-PIN SOCKET
R882	401 025 7429	CARBON 220 JA 1/6W	K1002	645 005 5867	21-PIN SOCKET
R883	401 105 2716	MT-GLAZE 220 JA 1/16W	PB101	610 282 2939	PWB, MAIN C2HC "D" SERIES
R884	401 105 0514	MT-GLAZE 1K JA 1/16W	SW501	610 011 2728	SWI TCH, LEVER 1P-3T
MISCELLANEOUS					
A101	645 040 4511	TUNER, U	TP-A	645 008 4058	TERMINAL PLUG
JS005	401 105 7919	MT-GLAZE 0. 000 ZA 1/16W	TP-B	645 008 4058	TERMINAL PLUG
JS006	401 105 7919	MT-GLAZE 0. 000 ZA 1/16W	VR641	645 006 5514	VR, SEMI, 2. 2K N
JS101	401 105 7919	MT-GLAZE 0. 000 ZA 1/16W	X121	645 001 7902	TRAP, CERAMIC (6. 0W3)
JS102	401 105 7919	MT-GLAZE 0. 000 ZA 1/16W	X131A	421 007 8606	SAW F TSB5387P
J118	401 105 7919	MT-GLAZE 0. 000 ZA 1/16W	X132	421 002 4702	SAW F TSF5322
J150	401 105 7919	MT-GLAZE 0. 000 ZA 1/16W	X231	645 042 3741	XTAL 4. 433MHZ 16PF KSS5MM
J203	401 105 7919	MT-GLAZE 0. 000 ZA 1/16W	X801	610 282 0201	CRYSTAL OSCILLATOR
J204	401 105 7919	MT-GLAZE 0. 000 ZA 1/16W	Z101	610 282 9693	SHIELD CASE C2HC-A
J211	CUTTING WIRE				
J212	CUTTING WIRE				
J213	CUTTING WIRE				
J218	401 105 7919	MT-GLAZE 0. 000 ZA 1/16W	1AA0B10H04300 ASSY,PWB,FRONT C2YH 0805		
J223	401 105 7919	MT-GLAZE 0. 000 ZA 1/16W	CAPACITOR		
J224	401 105 7919	MT-GLAZE 0. 000 ZA 1/16W	C042	403 069 9510	CERAMIC CHIP 0. 01 Z 50V
J228	401 105 7919	MT-GLAZE 0. 000 ZA 1/16W	C043	403 069 9510	CERAMIC CHIP 0. 01 Z 50V
J229	401 105 7919	MT-GLAZE 0. 000 ZA 1/16W	C046	403 085 7405	NP-ELECT 10U M 16V
J237	401 105 7919	MT-GLAZE 0. 000 ZA 1/16W	C047	403 085 7405	NP-ELECT 10U M 16V
J240	401 105 7919	MT-GLAZE 0. 000 ZA 1/16W	C049	403 069 9510	CERAMIC CHIP 0. 01 Z 50V
J243	401 105 7919	MT-GLAZE 0. 000 ZA 1/16W	C050	403 069 9510	CERAMIC CHIP 0. 01 Z 50V
J245	401 105 7919	MT-GLAZE 0. 000 ZA 1/16W	C1102	403 069 1712	CERAMIC 1000P K 50V
J247	401 105 7919	MT-GLAZE 0. 000 ZA 1/16W	C1103	403 233 0817	ELECT 10U M 50V
J305	401 105 7919	MT-GLAZE 0. 000 ZA 1/16W	C1104	403 233 0817	ELECT 10U M 50V
J318	401 105 7919	MT-GLAZE 0. 000 ZA 1/16W	C1107	403 069 1712	CERAMIC 1000P K 50V
J325	401 105 7919	MT-GLAZE 0. 000 ZA 1/16W	C1108	403 233 0817	ELECT 10U M 50V
J332	401 105 7919	MT-GLAZE 0. 000 ZA 1/16W	C1109	403 233 0817	ELECT 10U M 50V
J333	401 105 7919	MT-GLAZE 0. 000 ZA 1/16W	C1112	403 009 5718	CERAMIC 100P J 50V
J334	401 105 7919	MT-GLAZE 0. 000 ZA 1/16W	C1113	403 248 1618	ELECT 47U M 16V
J335	401 105 7919	MT-GLAZE 0. 000 ZA 1/16W	C1117	403 008 7416	CERAMIC 10P D 50V
J336	401 105 7919	MT-GLAZE 0. 000 ZA 1/16W	C1301	403 085 6705	NP-ELECT 47U M 16V
1AA0B10H04300 ASSY,PWB,FRONT C2YH 0805					
CAPACITOR					
C042 403 069 9510 CERAMIC CHIP 0. 01 Z 50V					
C043 403 069 9510 CERAMIC CHIP 0. 01 Z 50V					
C046 403 085 7405 NP-ELECT 10U M 16V					
C047 403 085 7405 NP-ELECT 10U M 16V					
C049 403 069 9510 CERAMIC CHIP 0. 01 Z 50V					
C050 403 069 9510 CERAMIC CHIP 0. 01 Z 50V					
C1102 403 069 1712 CERAMIC 1000P K 50V					
C1103 403 233 0817 ELECT 10U M 50V					
C1104 403 233 0817 ELECT 10U M 50V					
C1107 403 069 1712 CERAMIC 1000P K 50V					
C1108 403 233 0817 ELECT 10U M 50V					
C1109 403 233 0817 ELECT 10U M 50V					
C1112 403 009 5718 CERAMIC 100P J 50V					
C1113 403 248 1618 ELECT 47U M 16V					
C1117 403 008 7416 CERAMIC 10P D 50V					
C1301 403 085 6705 NP-ELECT 47U M 16V					
C1302 403 069 1712 CERAMIC 1000P K 50V					
C1303 403 023 4414 CERAMIC 330P J 50V					
C1305 403 028 4112 CERAMIC 56P J 50V					
C1306 403 237 8057 MT-COMPO 0. 1U J 50V					

Ref. No.	Part No.	Description	Ref. No.	Part No.	Description
C1310	403 248 1410	ELECT 1U M 50V	RESISTOR		
C1316	403 069 9510	CERAM C CHIP 0.01 Z 50V	R046	401 007 7641	CARBON 150 JA 1/2W
C1317	403 069 9510	CERAM C CHIP 0.01 Z 50V	R047	401 007 7641	CARBON 150 JA 1/2W
C1318	403 039 6508	ELECT 100U M 10V	R1101	401 038 0711	MT- GLAZE 2.2K JA 1/10W
C1319	403 069 9510	CERAM C CHIP 0.01 Z 50V	R1102	401 037 5717	MT- GLAZE 100K JA 1/10W
C1321	403 013 3014	CERAM C 150P J 50V	R1103	401 037 5717	MT- GLAZE 100K JA 1/10W
C1322	403 105 9511	CERAM C 1000P J 50V	R1104	401 038 0919	MT- GLAZE 220K JA 1/10W
C1323	403 105 9511	CERAM C 1000P J 50V	R1105	401 038 7710	MT- GLAZE 5.6K JA 1/10W
C1324	403 248 1618	ELECT 47U M 16V	R1106	401 038 0711	MT- GLAZE 2.2K JA 1/10W
C1325	403 069 9510	CERAM C CHIP 0.01 Z 50V	R1107	401 037 5717	MT- GLAZE 100K JA 1/10W
C1326	403 014 9213	CERAM C 180P J 50V	R1108	401 037 5717	MT- GLAZE 100K JA 1/10W
C1331	403 248 1618	ELECT 47U M 16V	R1109	401 038 0919	MT- GLAZE 220K JA 1/10W
C1332	403 069 9510	CERAM C CHIP 0.01 Z 50V	R1110	401 038 7710	MT- GLAZE 5.6K JA 1/10W
C1333	403 179 1718	POLYESTER 0.033U J 50V	R1301	401 037 5618	MT- GLAZE 10K JA 1/10W
C1334	403 069 9510	CERAM C CHIP 0.01 Z 50V	R1302	401 038 2210	MT- GLAZE 27K JA 1/10W
C1335	403 233 1517	50 YK 4R7 M TA 0511	R1303	401 037 5410	MT- GLAZE 1K JA 1/10W
C1341	403 179 3811	POLYESTER 0.01U K 50V	R1304	401 037 6615	MT- GLAZE 120 JA 1/10W
C1364	403 039 6508	ELECT 100U M 10V	R1305	401 038 5013	MT- GLAZE 390 JA 1/10W
C1901	403 218 8101	ELECT 100U M 25V	R1306	401 038 0919	MT- GLAZE 220K JA 1/10W
C2510	403 237 8057	MT- COMPO 0.1U J 50V	R1307	401 038 0810	MT- GLAZE 22K JA 1/10W
C2511	403 248 1410	ELECT 1U M 50V	R1309	401 037 5212	MT- GLAZE 100 JA 1/10W
C2512	403 039 6508	ELECT 100U M 10V	R1310	401 038 7512	MT- GLAZE 56 JA 1/10W
C2513	403 069 9510	CERAMIC CHIP 0.01 Z 50V	R1311	401 038 2210	MT- GLAZE 27K JA 1/10W
C691	404 060 7205	MT- POLYEST 0.1U M 250V	R1312	401 037 5816	MT- GLAZE 1M JA 1/10W
C692	404 060 7205	MT- POLYEST 0.1U M 250V	R1313	401 037 5618	MT- GLAZE 10K JA 1/10W
			R1314	401 037 5618	MT- GLAZE 10K JA 1/10W
			R1315	401 037 7810	MT- GLAZE 150 JA 1/10W
			R1316	401 037 6813	MT- GLAZE 12K JA 1/10W
			R1317	401 038 7710	MT- GLAZE 5.6K JA 1/10W
			R1318	401 038 6416	MT- GLAZE 4.7K JA 1/10W
			R1319	401 038 2319	MT- GLAZE 270K JA 1/10W
			R1320	401 038 2210	MT- GLAZE 27K JA 1/10W
			R1321	401 037 5410	MT- GLAZE 1K JA 1/10W
			R1322	401 038 7611	MT- GLAZE 560 JA 1/10W
			R1323	401 037 5618	MT- GLAZE 10K JA 1/10W
			R1324	401 038 3613	MT- GLAZE 3.3K JA 1/10W
			R1325	401 037 5410	MT- GLAZE 1K JA 1/10W
			R1326	401 038 6416	MT- GLAZE 4.7K JA 1/10W
			R1327	401 038 0810	MT- GLAZE 22K JA 1/10W
			R1328	401 038 0810	MT- GLAZE 22K JA 1/10W
			R1329	401 037 5410	MT- GLAZE 1K JA 1/10W
			R1330	401 038 9011	MT- GLAZE 680 JA 1/10W
			R1332	401 038 0810	MT- GLAZE 22K JA 1/10W
			R1333	401 037 5618	MT- GLAZE 10K JA 1/10W
			R1334	401 038 2210	MT- GLAZE 27K JA 1/10W
			R1335	401 037 5618	MT- GLAZE 10K JA 1/10W
			R1336	401 037 5618	MT- GLAZE 10K JA 1/10W
			R1338	401 037 5618	MT- GLAZE 10K JA 1/10W
			R1339	401 037 5212	MT- GLAZE 100 JA 1/10W
			R1340	401 037 6813	MT- GLAZE 12K JA 1/10W
			R1341	401 038 2111	MT- GLAZE 2.7K JA 1/10W
			R1342	401 038 2111	MT- GLAZE 2.7K JA 1/10W
			R1343	401 038 2111	MT- GLAZE 2.7K JA 1/10W
			R1344	401 037 6318	MT- GLAZE 110K JA 1/10W
			R1346	401 038 1015	MT- GLAZE 2.2M JA 1/10W
			R1347	401 037 5618	MT- GLAZE 10K JA 1/10W
			R1348	401 037 5410	MT- GLAZE 1K JA 1/10W
			R1349	401 038 9318	MT- GLAZE 68K JA 1/10W
			R1351	401 037 5212	MT- GLAZE 100 JA 1/10W
			R1352	401 037 5212	MT- GLAZE 100 JA 1/10W
			R1353	401 037 5212	MT- GLAZE 100 JA 1/10W
			R1361	401 037 9418	MT- GLAZE 180K JA 1/10W
			R1362	401 037 5014	MT- GLAZE 0.000 ZA 1/10W
			R1952	401 038 3514	MT- GLAZE 330 JA 1/10W
			R1953	401 037 7919	MT- GLAZE 1.5K JA 1/10W
			R1954	401 025 1922	CARBON 15K JA 1/6W
			R1955	401 027 8622	CARBON 8K2 JA 1/6W
			R1956	401 026 9927	CARBON 4K7 JA 1/6W
			R1957	401 038 2111	MT- GLAZE 2.7K JA 1/10W
			R1958	401 038 0711	MT- GLAZE 2.2K JA 1/10W
DIODE					
D1102	408 007 8607	DIODE 1N4148			
D1103	408 007 8607	DIODE 1N4148			
D1301	407 012 4416	DIODE 1SS133-T-77			
D1302	407 012 4416	DIODE 1SS133-T-77			
D1901	407 158 9204	LED SPR-39M/WF			
D1901A	610 222 0322	LED HOLDER-G2CA-A			
D2513	407 012 4416	DIODE 1SS133-T-77			
D2514	407 012 4416	DIODE 1SS133-T-77			
INTERGRATED CIRCUIT					
IC1301	409 018 3902	IC LA6393D			
IC1302	409 301 2803	IC MN1381-Q			
IC1303	410 260 8300	IC M34225M1-548SP			
IC1304	409 203 2911	IC SN74LS123M-R			
COIL					
L041	645 002 4511	CORE, PIPE			
L042	645 008 5635	INDUCTOR, 12U K			
L043	645 008 5635	INDUCTOR, 12U K			
L1101	645 001 4550	PEAKING COIL 10UHK			
L1106	645 001 4550	PEAKING COIL 10UHK			
L1301	645 003 7122	INDUCTOR, 330U J			
L1305	645 001 4581	PEAKING COIL			
L691	645 019 3873	LINE FILTER-SAMWHA TECOM			
L692	610 237 1000	PIPE CORE			
L693	610 237 1000	PIPE CORE			
TRANSISTOR					
Q1101	405 014 4519	TR 2SC2412KT146/R			
Q1106	405 014 4519	TR 2SC2412KT146/R			
Q1301	405 014 4519	TR 2SC2412KT146/R			
Q1302	405 014 4519	TR 2SC2412KT146/R			
Q1304	405 014 4519	TR 2SC2412KT146/R			
Q1305	405 014 4519	TR 2SC2412KT146/R			
Q1306	405 014 4519	TR 2SC2412KT146/R			
Q1307	405 014 4519	TR 2SC2412KT146/R			
Q1309	405 014 4519	TR 2SC2412KT146/R			
Q1311	405 014 4519	TR 2SC2412KT146/R			
Q1313	405 014 4519	TR 2SC2412KT146/R			
Q2502	405 014 4519	TR 2SC2412KT146/R			
Q2503	405 014 4519	TR 2SC2412KT146/R			
Q2506	405 014 4519	TR 2SC2412KT146/R			

Ref. No.	Part No.	Description	Ref. No.	Part No.	Description
R2510	401 038 3811	MT-GLAZE 330K JA 1/10W	C1217	403 233 0817	ELECT 10U M 50V
R2512	401 037 5618	MT-GLAZE 10K JA 1/10W	C1218	403 153 9310	CERAMI C 82P J 50V
R2514	401 037 6714	MT-GLAZE 1.2K JA 1/10W	C3138	403 160 0020	ELECT 470U M 10V
R2515	401 038 3613	MT-GLAZE 3.3K JA 1/10W	C3139	403 248 1618	ELECT 47U M 16V
R2516	401 037 5618	MT-GLAZE 10K JA 1/10W	C3452	403 314 5915	SMD CAP GRM40X5R474K16
R2517	401 037 5410	MT-GLAZE 1K JA 1/10W	C3453	403 157 2911	CERAMI C 47P J 50V
R2518	401 037 5410	MT-GLAZE 1K JA 1/10W	C3454	403 164 0214	CERAMI C 0.1U Z 25V
R2521	401 037 5618	MT-GLAZE 10K JA 1/10W	C3456	403 298 9619	CERAMI C 0.1U K 16V
R2525	401 037 5014	MT-GLAZE 0.000 ZA 1/10W	C3458	403 157 2911	CERAMI C 47P J 50V
R2526	401 037 5410	MT-GLAZE 1K JA 1/10W	C3459	403 248 1618	ELECT 47U M 16V
R2527	401 038 3712	MT-GLAZE 33K JA 1/10W	C3461	403 248 1410	ELECT 1U M 50V
MISCELLANEOUS			C3467	403 248 1410	ELECT 1U M 50V
A1901A	645 028 1044	REMO REC SPS-443-1-E	C3468	403 164 0214	CERAMI C 0.1U Z 25V
△ F691	423 022 2102	FUSE 250V 4.0A	C3469	403 164 0214	CERAMI C 0.1U Z 25V
F691-1	645 000 5077	HOLDER, FUSE	C3473	403 279 4312	CERAMI C 0.33U K 16V
F691-2	645 000 5077	HOLDER, FUSE	C3474	403 279 4312	CERAMI C 0.33U K 16V
JT1308	401 037 5014	MT-GLAZE 0.000 ZA 1/10W	C3476	403 314 5915	SMD CAP GRM40X5R474K16
JT1309	401 037 5014	MT-GLAZE 0.000 ZA 1/10W	C3477	403 248 1618	ELECT 47U M 16V
JT1311	401 037 5014	MT-GLAZE 0.000 ZA 1/10W	C3480	403 248 1618	ELECT 47U M 16V
J1315	401 037 5014	MT-GLAZE 0.000 ZA 1/10W	C3481	403 248 1618	ELECT 47U M 16V
J1322	401 025 1922	CARBON 15K JA 1/6W	C3482	403 149 9218	CERAMI C 0.01U Z 50V
J1332	401 026 9927	CARBON 4K7 JA 1/6W	C3483	403 149 9218	CERAMI C 0.01U Z 50V
J1351	401 037 5014	MT-GLAZE 0.000 ZA 1/10W	C3484	403 248 1618	ELECT 47U M 16V
K041	645 005 5706	PHONE JACK HTJ-035-10AB	C3485	403 149 9218	CERAMI C 0.01U Z 50V
K1101	645 002 0568	TERMI NAL, BOARD	C3486	403 248 1410	ELECT 1U M 50V
K19A	645 008 5536	SOCKET, 7P	C3487	403 248 1410	ELECT 1U M 50V
K19E-1	645 008 4058	TERMI NAL PLUG	C3492	403 149 9218	CERAMI C 0.01U Z 50V
K19E-2	645 008 4058	TERMI NAL PLUG	C3493	403 149 9218	CERAMI C 0.01U Z 50V
K19F-1	645 008 4058	TERMI NAL PLUG	C3494	403 164 0214	CERAMI C 0.1U Z 25V
K19F-2	645 008 4058	TERMI NAL PLUG	C3495	403 164 0214	CERAMI C 0.1U Z 25V
K19FF-1	645 008 4058	TERMI NAL PLUG	C3501	403 233 0817	ELECT 10U M 50V
K19FF-2	645 008 4058	TERMI NAL PLUG	C3502	403 157 7312	CERAMI C 6800P K 50V
K19G	645 004 2942	PLUG, 8P	C3503	403 313 8016	CERAMI C 1000P J 25V
K19H	645 008 7288	HOUSING PLUG 5P	C3504	403 298 9619	CERAMI C 0.1U K 16V
K19LL	645 004 2881	PLUG, 2P	C3505	403 248 1618	ELECT 47U M 16V
K19N	645 004 2942	PLUG, 8P	C3506	403 248 2813	50 YK 2R2 M TA 0511
K19RR-1	645 008 4058	TERMI NAL PLUG	C3507	403 215 2211	CERAMI C 0.01U K 50V
K19RR-2	645 008 4058	TERMI NAL PLUG	C3508	403 215 2211	CERAMI C 0.01U K 50V
K19U	645 008 5512	SOCKET, 5P	C3509	403 215 2211	CERAMI C 0.01U K 50V
PB1901	610 282 2991	PWB, FRONT C2HC X3 "A"	C3510	403 215 2211	CERAMI C 0.01U K 50V
PS691	408 013 3801	TH PTH451C262BF140M270	C3511	403 313 8016	CERAMI C 1000P J 25V
SW1951	610 011 4432	SWITCH, PUSH	C3512	403 298 9619	CERAMI C 0.1U K 16V
SW1952	610 011 4432	SWITCH, PUSH	C3513	403 157 7312	CERAMI C 6800P K 50V
SW1953	610 011 4432	SWITCH, PUSH	C3514	403 233 0817	ELECT 10U M 50V
SW1954	610 011 4432	SWITCH, PUSH	C3515	403 248 2813	50 YK 2R2 M TA 0511
△ SW691	645 024 0607	PUSH SW POWER SDDFC3	C3516	403 233 0817	ELECT 10U M 50V
VR1301	645 006 5521	VR, SEMI, 22K N	C3517	403 269 5916	CERAMI C 0.22U K 16V
XL1301	645 000 2328	FIL TER, EMI 13000PF	C3518	403 248 1618	ELECT 47U M 16V
XL1302	645 000 2328	FIL TER, EMI 13000PF	C3520	403 248 1618	ELECT 47U M 16V
X1301	645 006 1752	CERAMI C OSCIL LATOR	C3521	403 279 4312	CERAMI C 0.33U K 16V
1AA0B10E59200 CAPACITOR			C3522	403 279 4312	CERAMI C 0.33U K 16V
C1200	403 047 8402	ELECT 0.1U M 50V	INTERGRATED CIRCUIT		
C1201	403 149 9218	CERAMI C 0.01U Z 50V	IC1201	409 419 5406	IC MM1313BD
C1202	403 248 1618	ELECT 47U M 16V	IC3102	409 241 5407	IC BA178M05T
C1204	403 233 1111	ELECT 22U M 50V	IC3451	409 445 1403	IC TDA9875A/V2
C1205	403 298 9619	CERAMI C 0.1U K 16V	IC3501	409 405 6004	IC MM1369BD
C1206	403 298 9619	CERAMI C 0.1U K 16V	COIL		
C1207	403 233 0817	ELECT 10U M 50V	L1201	645 008 2467	PEAKING COIL
C1208	403 157 3611	CERAMI C 100P J 50V	L1202	645 008 2467	PEAKING COIL
C1209	403 157 3611	CERAMI C 100P J 50V	L1203	645 008 2467	PEAKING COIL
C1211	403 153 9310	CERAMI C 82P J 50V	L1204	645 008 2467	PEAKING COIL
C1212	403 153 9310	CERAMI C 82P J 50V	L1205	645 008 2467	PEAKING COIL
C1213	403 153 9310	CERAMI C 82P J 50V	L1206	645 008 2467	PEAKING COIL
C1214	403 153 9310	CERAMI C 82P J 50V	L3450	401 105 7919	MT-GLAZE 0.000 ZA 1/16W
C1215	403 153 9310	CERAMI C 82P J 50V	L3452	645 008 2214	PEAKING COIL 2.2UHK
C1216	403 233 0817	ELECT 10U M 50V	L3453	645 008 2214	PEAKING COIL 2.2UHK
			L3456	645 008 2214	PEAKING COIL 2.2UHK
			L3457	645 008 2214	PEAKING COIL 2.2UHK

Ref. No.	Part No.	Description	Ref. No.	Part No.	Description
L3459	401 105 7919	MT-GLAZE 0.000 ZA 1/16W	R3502	401 105 0415	MT-GLAZE 100 JA 1/16W
L3469	645 008 2467	PEAKING COIL	R3503	401 105 7315	MT-GLAZE 820 JA 1/16W
TRANSISTOR			R3504	401 105 0514	MT-GLAZE 1K JA 1/16W
Q1202	405 014 4519	TR 2SC2412KT146/R	R3505	401 105 7513	MT-GLAZE 82K JA 1/16W
Q1203	405 014 4519	TR 2SC2412KT146/R	R3506	401 105 2112	MT-GLAZE 18K JA 1/16W
Q1204	405 014 4519	TR 2SC2412KT146/R	R3507	401 105 2815	MT-GLAZE 2.2K JA 1/16W
Q1205	405 014 4519	TR 2SC2412KT146/R	R3508	401 105 0514	MT-GLAZE 1K JA 1/16W
Q1206	405 014 4519	TR 2SC2412KT146/R	R3509	401 105 6615	MT-GLAZE 6.8K JA 1/16W
Q1207	405 002 0318	TR 2SA1037K-T96-R	R3510	401 105 5311	MT-GLAZE 4.7K JA 1/16W
Q3452	405 014 4519	TR 2SC2412KT146/R	R3511	401 105 3010	MT-GLAZE 220K JA 1/16W
Q3453	405 014 4519	TR 2SC2412KT146/R	R3512	401 105 8114	MT-GLAZE 56K JA 1/16W
Q3454	405 014 4519	TR 2SC2412KT146/R	R3513	401 105 8114	MT-GLAZE 56K JA 1/16W
Q3455	405 014 4519	TR 2SC2412KT146/R	R3514	401 105 4611	MT-GLAZE 3.9K JA 1/16W
Q3501	405 014 4519	TR 2SC2412KT146/R	R3515	401 105 0514	MT-GLAZE 1K JA 1/16W
Q3502	405 014 4519	TR 2SC2412KT146/R	R3516	401 105 2815	MT-GLAZE 2.2K JA 1/16W
Q3503	405 014 4519	TR 2SC2412KT146/R	R3517	401 105 0514	MT-GLAZE 1K JA 1/16W
RESISTOR			R3518	401 105 2815	MT-GLAZE 2.2K JA 1/16W
R1200	401 105 1412	MT-GLAZE 150 JA 1/16W	X3451	645 024 7484	OSC, CRYSTAL 24.576MHZ
R1201	401 105 3218	MT-GLAZE 270 JA 1/16W	Z1200	610 285 9614	SHIELD CASE-B-N-C2HC
R1202	401 105 3218	MT-GLAZE 270 JA 1/16W	MISCELLANEOUS		
R1203	401 105 3218	MT-GLAZE 270 JA 1/16W	J1203	401 105 7919	MT-GLAZE 0.000 ZA 1/16W
R1204	401 105 0415	MT-GLAZE 100 JA 1/16W	J1204	401 105 7919	MT-GLAZE 0.000 ZA 1/16W
R1205	401 105 0415	MT-GLAZE 100 JA 1/16W	J1206	401 105 7919	MT-GLAZE 0.000 ZA 1/16W
R1206	401 105 3218	MT-GLAZE 270 JA 1/16W	J1207	401 105 7919	MT-GLAZE 0.000 ZA 1/16W
R1207	401 105 0415	MT-GLAZE 100 JA 1/16W	J1210	401 105 7919	MT-GLAZE 0.000 ZA 1/16W
R1208	401 105 0415	MT-GLAZE 100 JA 1/16W	J3450	401 105 7919	MT-GLAZE 0.000 ZA 1/16W
R1211	401 105 0415	MT-GLAZE 100 JA 1/16W	J3451	401 105 7919	MT-GLAZE 0.000 ZA 1/16W
R1212	401 105 0415	MT-GLAZE 100 JA 1/16W	J3452	401 105 7919	MT-GLAZE 0.000 ZA 1/16W
R1213	401 105 0415	MT-GLAZE 100 JA 1/16W	J3453	401 105 7919	MT-GLAZE 0.000 ZA 1/16W
R1214	401 105 0415	MT-GLAZE 100 JA 1/16W	J3457	401 105 7919	MT-GLAZE 0.000 ZA 1/16W
R1215	401 105 0415	MT-GLAZE 100 JA 1/16W	J3458	401 105 7919	MT-GLAZE 0.000 ZA 1/16W
R1216	401 105 7919	MT-GLAZE 0.000 ZA 1/16W	J3459	401 105 7919	MT-GLAZE 0.000 ZA 1/16W
R1217	401 105 5212	MT-GLAZE 470 JA 1/16W	J3460	401 105 7919	MT-GLAZE 0.000 ZA 1/16W
R1219	401 105 1016	MT-GLAZE 1.2K JA 1/16W	J3461	401 105 7919	MT-GLAZE 0.000 ZA 1/16W
R1220	401 105 1016	MT-GLAZE 1.2K JA 1/16W	J3462	401 105 7919	MT-GLAZE 0.000 ZA 1/16W
R1221	401 105 5311	MT-GLAZE 4.7K JA 1/16W	J3463	401 105 7919	MT-GLAZE 0.000 ZA 1/16W
R1222	401 105 5311	MT-GLAZE 4.7K JA 1/16W	J3464	401 105 7919	MT-GLAZE 0.000 ZA 1/16W
R1223	401 105 5212	MT-GLAZE 470 JA 1/16W	J3465	401 105 7919	MT-GLAZE 0.000 ZA 1/16W
R1224	401 105 5311	MT-GLAZE 4.7K JA 1/16W	J3471	401 105 7919	MT-GLAZE 0.000 ZA 1/16W
R1225	401 105 5311	MT-GLAZE 4.7K JA 1/16W	J3491	401 105 7919	MT-GLAZE 0.000 ZA 1/16W
R1226	401 105 5212	MT-GLAZE 470 JA 1/16W	J3492	401 105 7919	MT-GLAZE 0.000 ZA 1/16W
R1227	401 105 3218	MT-GLAZE 270 JA 1/16W	K12H	645 004 2713	HOUSING PLUG 5P
R1228	401 105 6011	MT-GLAZE 5.6K JA 1/16W	K12J	645 040 4610	PLUG, PWB-PWB 15P
R1229	401 105 2013	MT-GLAZE 1.8K JA 1/16W	K12M	645 039 9411	PLUG, PWB-PWB 20P
R1230	401 105 3218	MT-GLAZE 270 JA 1/16W	1AA0B10E59400 ASSY,PWB,CRT C2HC		
R1231	401 105 1412	MT-GLAZE 150 JA 1/16W	CAPACITOR		
R1232	401 105 5212	MT-GLAZE 470 JA 1/16W	C711	403 159 7409	MT-POLYEST 0.1U K 250V
R3451	401 105 0415	MT-GLAZE 100 JA 1/16W	C712	403 237 7941	MT-COMPO 0.22U J 50V
R3452	401 105 0415	MT-GLAZE 100 JA 1/16W	C718	403 077 2728	CERAMIC 1000P P 2K
R3453	401 105 0613	MT-GLAZE 10K JA 1/16W	C721	403 248 1608	ELECT 47U M 16V
R3454	401 105 0415	MT-GLAZE 100 JA 1/16W	C722	403 055 8401	ELECT 22U M 250V
R3455	401 105 0613	MT-GLAZE 10K JA 1/16W	C731	403 074 5712	CERAMIC 560P K 50V
R3464	401 105 0415	MT-GLAZE 100 JA 1/16W	DIODE		
R3465	401 105 0613	MT-GLAZE 10K JA 1/16W	D701	407 012 4416	DIODE 1SS133-T-77
R3471	401 105 3218	MT-GLAZE 270 JA 1/16W	D702	407 012 4416	DIODE 1SS133-T-77
R3473	401 105 5212	MT-GLAZE 470 JA 1/16W	D703	407 012 4416	DIODE 1SS133-T-77
R3474	401 105 2815	MT-GLAZE 2.2K JA 1/16W	D721	407 012 4416	DIODE 1SS133-T-77
R3475	401 105 5212	MT-GLAZE 470 JA 1/16W	INTERGRATED CIRCUIT		
R3476	401 105 2815	MT-GLAZE 2.2K JA 1/16W	IC701	409 468 8403	IC TDA6103Q/N3
R3477	401 105 4710	MT-GLAZE 39K JA 1/16W	IC701-1	610 283 8657	ASSY, CRT HEAT SINK C2HC
R3478	401 105 4710	MT-GLAZE 39K JA 1/16W	COIL		
R3479	401 105 1610	MT-GLAZE 15K JA 1/16W	△L721	401 016 1617	C.RES 22 JA 1/4W FLAM-RET
R3480	401 105 1610	MT-GLAZE 15K JA 1/16W	TRANSISTOR		
R3485	401 105 5212	MT-GLAZE 470 JA 1/16W	Q721	406 007 1901	TR JC556A
R3486	401 105 2815	MT-GLAZE 2.2K JA 1/16W			
R3487	401 105 5212	MT-GLAZE 470 JA 1/16W			
R3488	401 105 2815	MT-GLAZE 2.2K JA 1/16W			
R3501	401 261 0717	MT-GLAZE 7.5K FA 1/16W			

Ref. No.	Part No.	Description
RESISTOR		
R701	401 025 7825	CARBON 2K2 JA 1/6W
R702	401 025 7825	CARBON 2K2 JA 1/6W
R703	401 025 7825	CARBON 2K2 JA 1/6W
R704	401 007 2319	CARBON 100K JA 1/2W
△ R705	401 065 0804	OXIDE-MT 100K JA 2W
R706	401 007 2319	CARBON 100K JA 1/2W
R707	401 024 9325	CARBON 1K2 JA 1/6W
R708	401 024 9325	CARBON 1K2 JA 1/6W
R709	401 024 9325	CARBON 1K2 JA 1/6W
R711	401 025 8723	CARBON 220K JA 1/6W
R712	401 025 9819	CARBON 2.4K JA 1/6W
R713	401 007 8440	CARBON 1.5K JA 1/2W
R714	401 007 8440	CARBON 1.5K JA 1/2W
R715	401 007 8440	CARBON 1.5K JA 1/2W
R718	401 007 8440	CARBON 1.5K JA 1/2W
R721	401 024 7430	CARBON 10K JA 1/6W
R722	401 024 7430	CARBON 10K JA 1/6W

Ref. No.	Part No.	Description
MISCELLANEOUS		
K7D2	645 008 4058	TERMINAL PLUG
K7M1	645 008 4058	TERMINAL PLUG
7M2	645 008 4058	TERMINAL PLUG
K7P	645 008 7288	HOUSING PLUG 5P
K7Q	645 008 7264	HOUSING PLUG 3P
△ K701	645 031 7699	CRT SKT. HPS-014103

1AA0B10H047D0 ASSY,PWB,HARMONICS EB6WAB
COIL
L1600 645 042 2829 CHOKE, ETQR45T007B PANA

Ref. No.	Part No.	Description
MISCELLANEOUS		
K16H-1	645 008 4058	TERMINAL PLUG
K16H-2	645 008 4058	TERMINAL PLUG
PB1600	610 286 8722	PWB, HARMONICS C2WFW

OUT OF CIRCUIT-013C3HAL
COIL
L901 645 037 4227 DEGAUSS COIL 28" WIDE

TRANSISTOR
Q901 414 010 7100 PHILIPS W66ECK001X14 CRT

Ref. No.	Part No.	Description
MISCELLANEOUS		
SP901	645 047 2046	SPEAKER 8 H125/1039
SP902	645 047 2046	SPEAKER 8 H125/1039
W901	645 011 8838	3P AC CORD +2P HOUSE @2.1
W902	610 291 6669	GND CONNECTOR 28"W

CE32WN5-B-00
ALL PANELS ARE THE SAME AS CE28WN5-B-00
EXCEPT THE FOLLOWING DIFFERENCES

1AA0B10H046C0 ASSY, PWB, MAIN C2YAV
CAPACITOR

Ref. No.	Part No.	Description
C421	CMXAA3Y782HAN	MT-PPRO ECWH20782
C422	CN2J273JBGAQN	POLYPRO 0.027U
C423	CMXAA3Y982HAN	MT-PPRO ECWH20982
C441	CN2D224JBGAQN	POLYPRO 0.22U
C443	CN2D184JBGAQN	POLYPRO 0.18U
C642	CEXAA2C271AAN	ELECT 270U

COIL
L441 645 029 8035 COIL, LINEARITY 32" WIDE
L462 645 016 9120 COIL.

Ref. No.	Part No.	Description
RESISTOR		
R435	402 072 1204	WIRE WOUND 1.8 KA 7W
R451	401 066 3705	OXIDE-MT 2.7 JA 2W
R455	401 016 5843	CARBON 220K JA 1/4W
R471	401 026 9620	CARBON 470 JA 1/6W
R519	401 114 0116	MT-GLAZE 1.5M JA 1/16W
R534	401 053 4213	MT-FILM 5K6 FA 1/6W
R537	401 105 6011	MT-GLAZE 5.6K JA 1/16W
R643	401 065 5809	OXIDE-MT 15 JA 2W

TRANSFORMER
T451 640 387 197 TRANS, FLYBACK
T611 645 040 1824 TRANS, POWER, PULSE

MISCELLANEOUS
KSC 645 008 405 TERMINAL PLUG

OUT OF CIRCUIT-013C3YAV - DIFFERENCES

COIL
L901 645 037 4234 D/COIL 32 WIDE

TRANSISTOR
Q901 414 011 0803 W76EGV023X015 CRT 50

Ref. No.	Part No.	Description
MISCELLANEOUS		
W902	610 291 6652	GND CONNECTOR 32"W
W902A	610 206 0300	GROUNDING SPRING-S4LA
W902B	610 206 0300	GROUNDING SPRING-S4LA

All information in this manual is correct at the start of production. Sanyo reserves the right to modify components and procedures in order to comply with their continuous improvement policy.



Sanyo Industries (UK) Ltd
Printed in UK